



MINISTERO DELL'AMBIENTE  
E DELLA TUTELA DEL TERRITORIO E DEL MARE



Commissario di Governo per le Bonifiche e  
la Tutela delle Acque nella Regione Campania



**ACCORDO DI PROGRAMMA**

Per la definizione degli interventi di messa in sicurezza e bonifica delle aree comprese  
nel Sito di Interesse Nazionale di Napoli Orientale



**INTERVENTI DI MESSA IN SICUREZZA E BONIFICA DELLA FALDA  
DEL SIN NAPOLI ORIENTALE E REALIZZAZIONE DELLA PRIMA FASE ATTUATIVA  
PROGETTO DEFINITIVO**

Titolo elaborato  
**MODELLO IDROGEOLOGICO DI FALDA E  
DI TRASPORTO DEI CONTAMINANTI  
5/5**

Tavola  
**ED 04**

Redatto da



Project Manager :  
Ing. Rosanna GRADO

IL DIRETTORE TECNICO  
Ing. Carlo MESSINA



Redatto da :

Geol. A. CARLONI (modello idrogeologico)

Il Responsabile  
del Procedimento  
Ing. Pasquale PARENTE

Cod. Commessa

Codice

Nome file

Data : Maggio 2016

CAM 805

PD

ED

0

0

4

rev.  
2

CAM805\_PDEG004\_2

Rev. Data Descrizione modifica

verificato

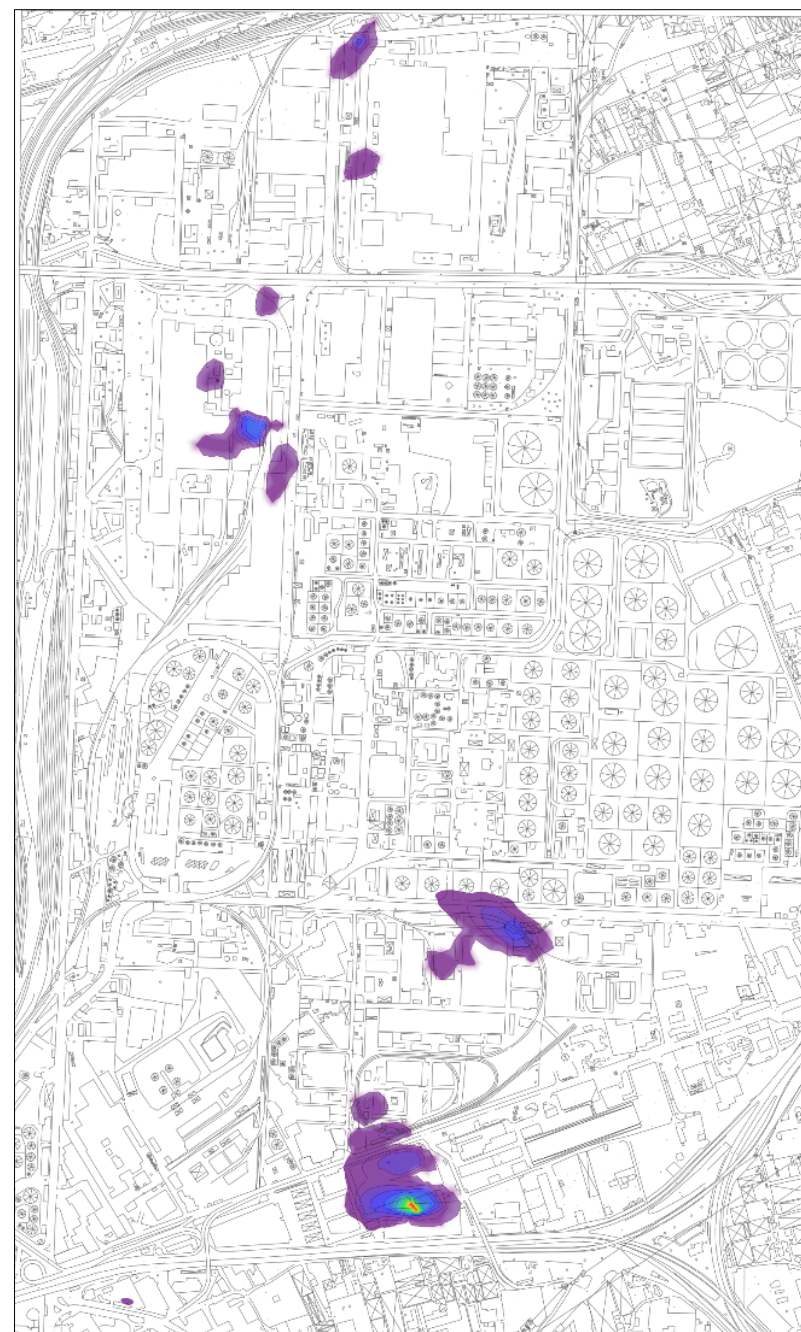
approvato

0	lug/2015	1ª Emissione
1	gen/2016	2ª Emissione CdS Istruttoria MATTM 7/10/2015
2	mag/2016	3ª Emissione Riunione Tecnica MATTM 8/4/2016

## SOLUZIONI MODELLO DI TRASPORTO: TETRACLOROETILENE (PCE)



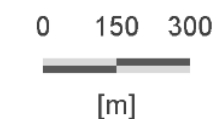
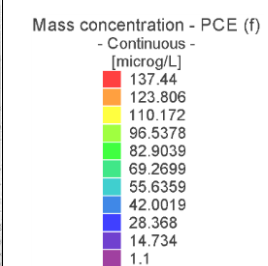
$[t_0]$



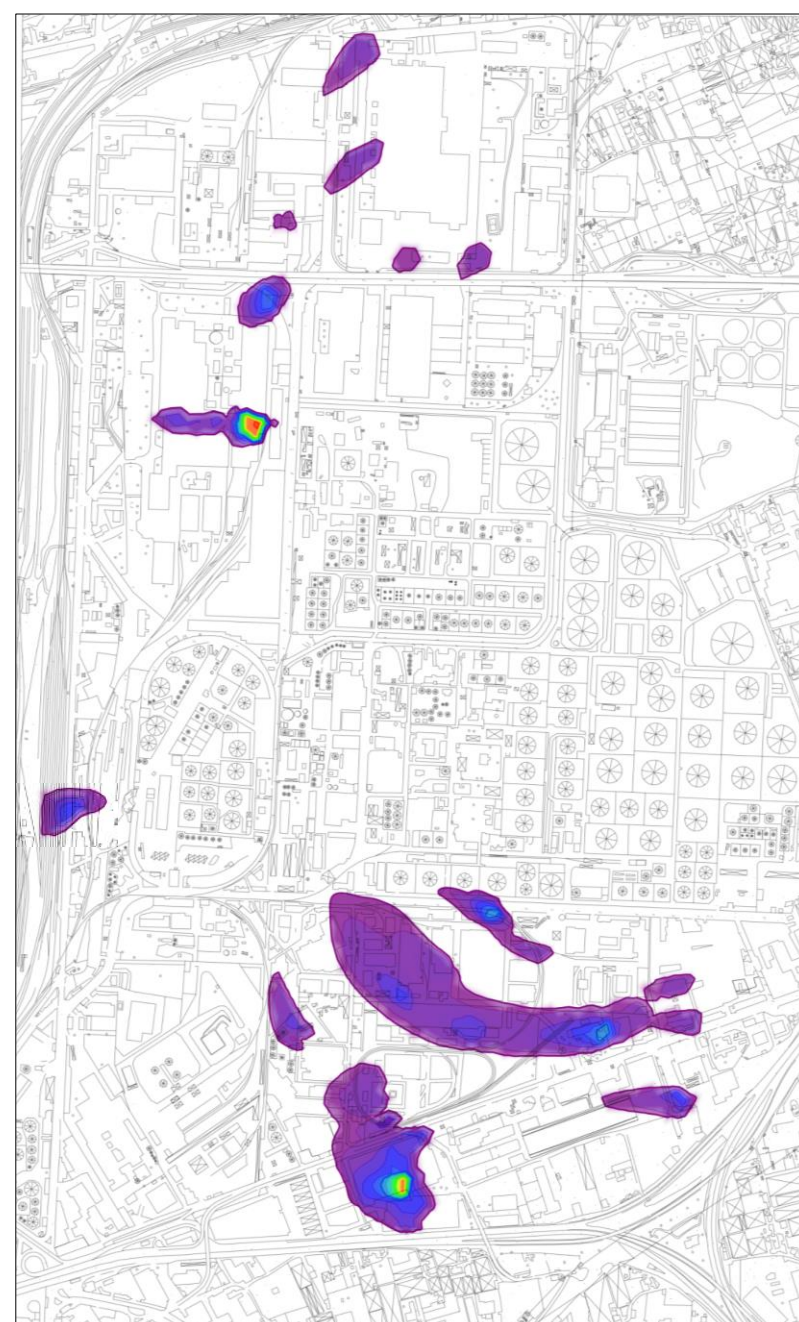
$[t_1]$



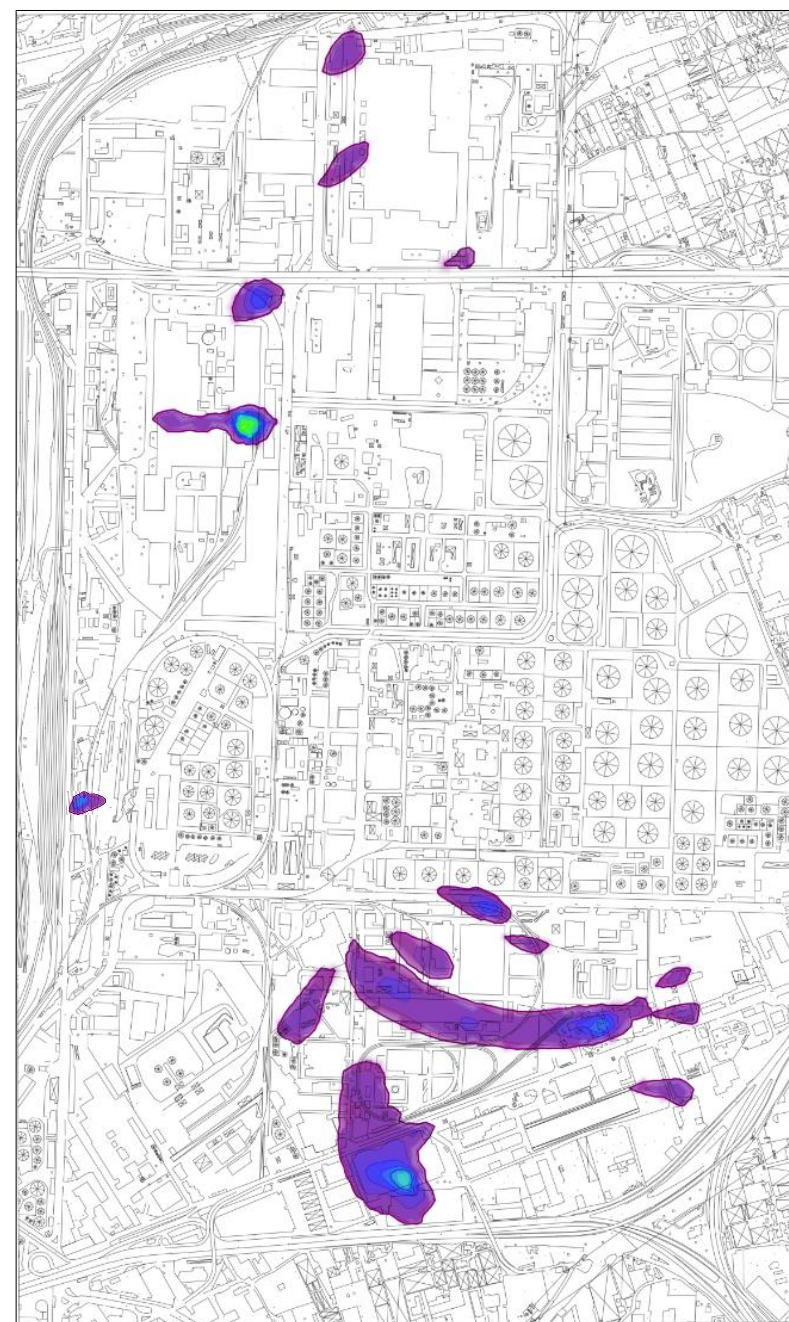
$[t_2]$



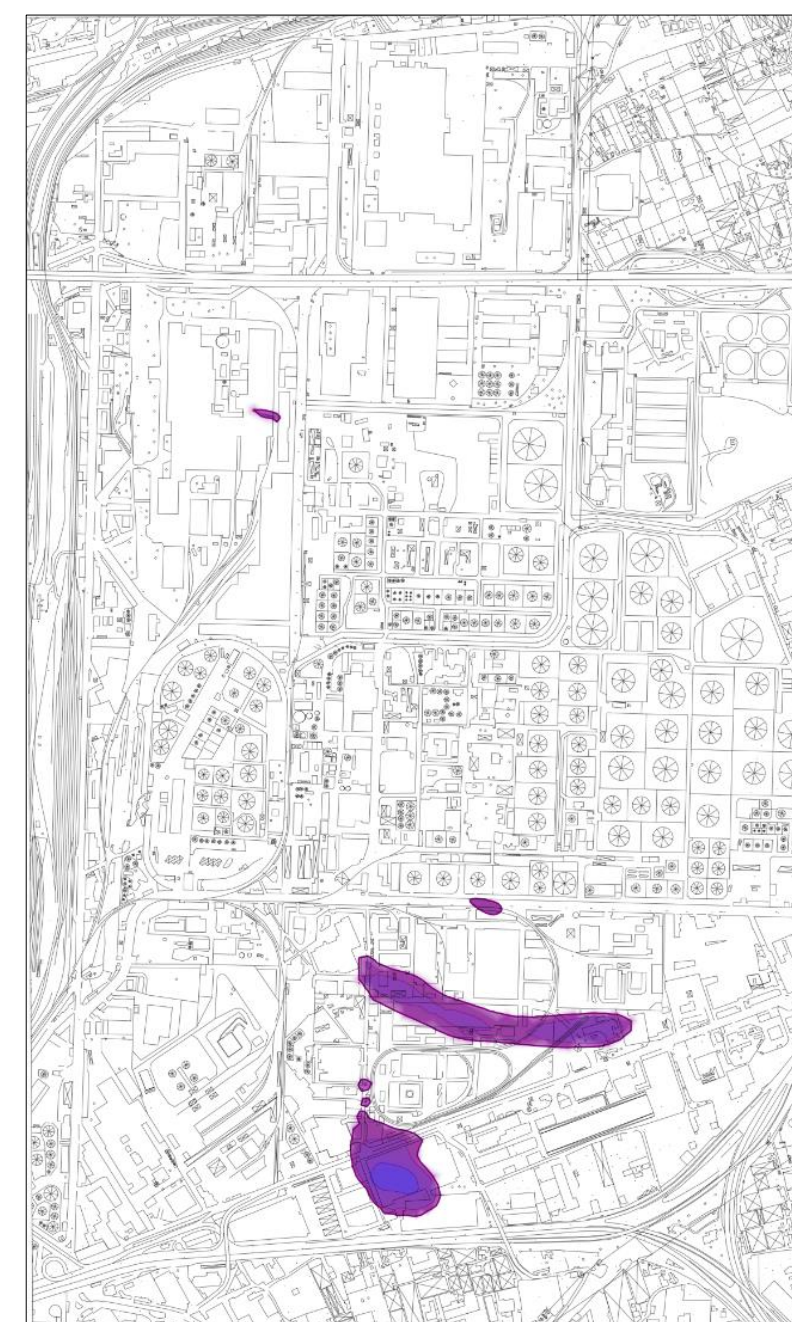
## SOLUZIONI MODELLO DI TRASPORTO: TRICLOROETILENE (TCE)



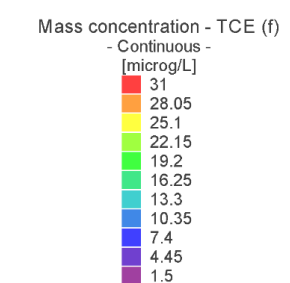
$[t_0]$



$[t_1]$



$[t_2]$



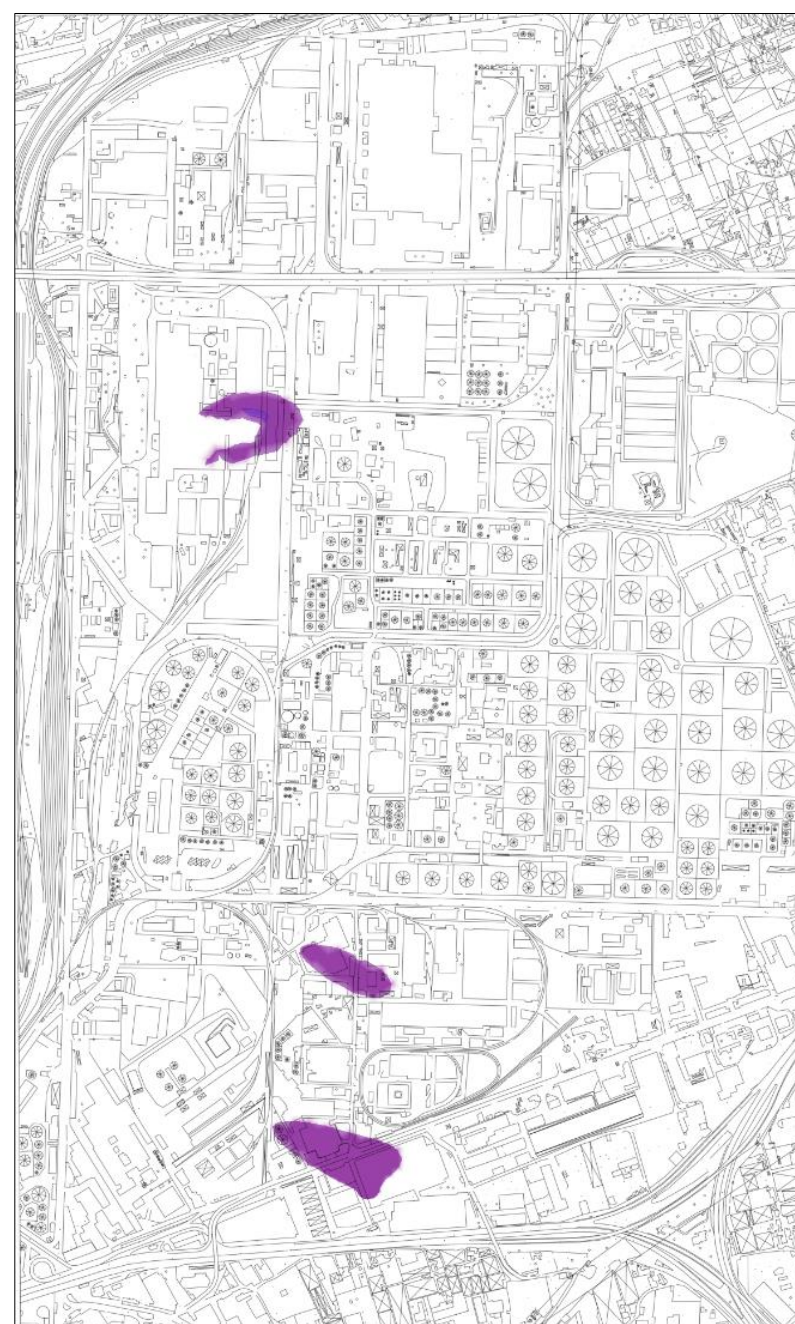
0 150 300

[m]

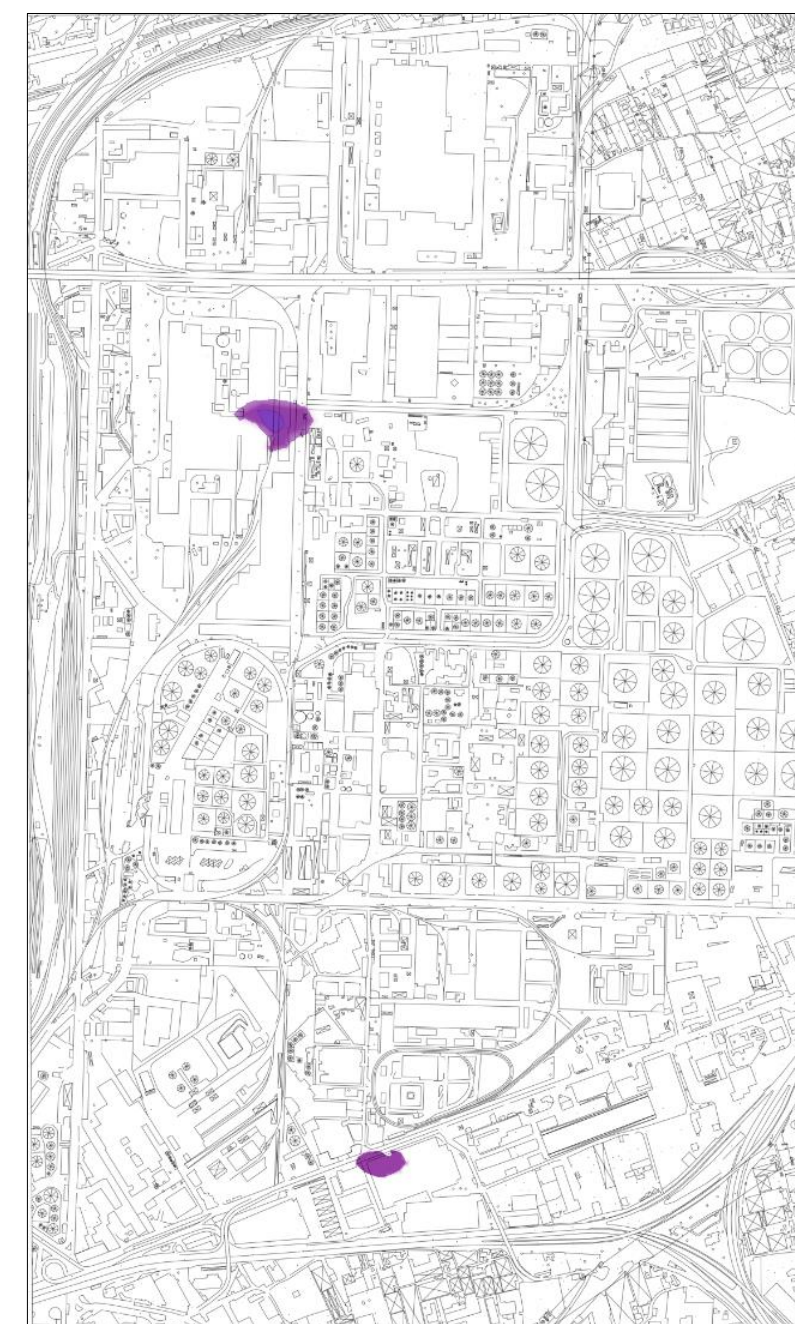
### SOLUZIONI MODELLO DI TRASPORTO: 1,1 DICLOROETILENE (1,1 DCE)



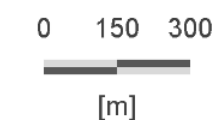
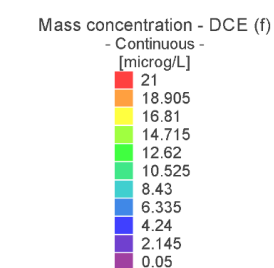
[ $t_0$ ]



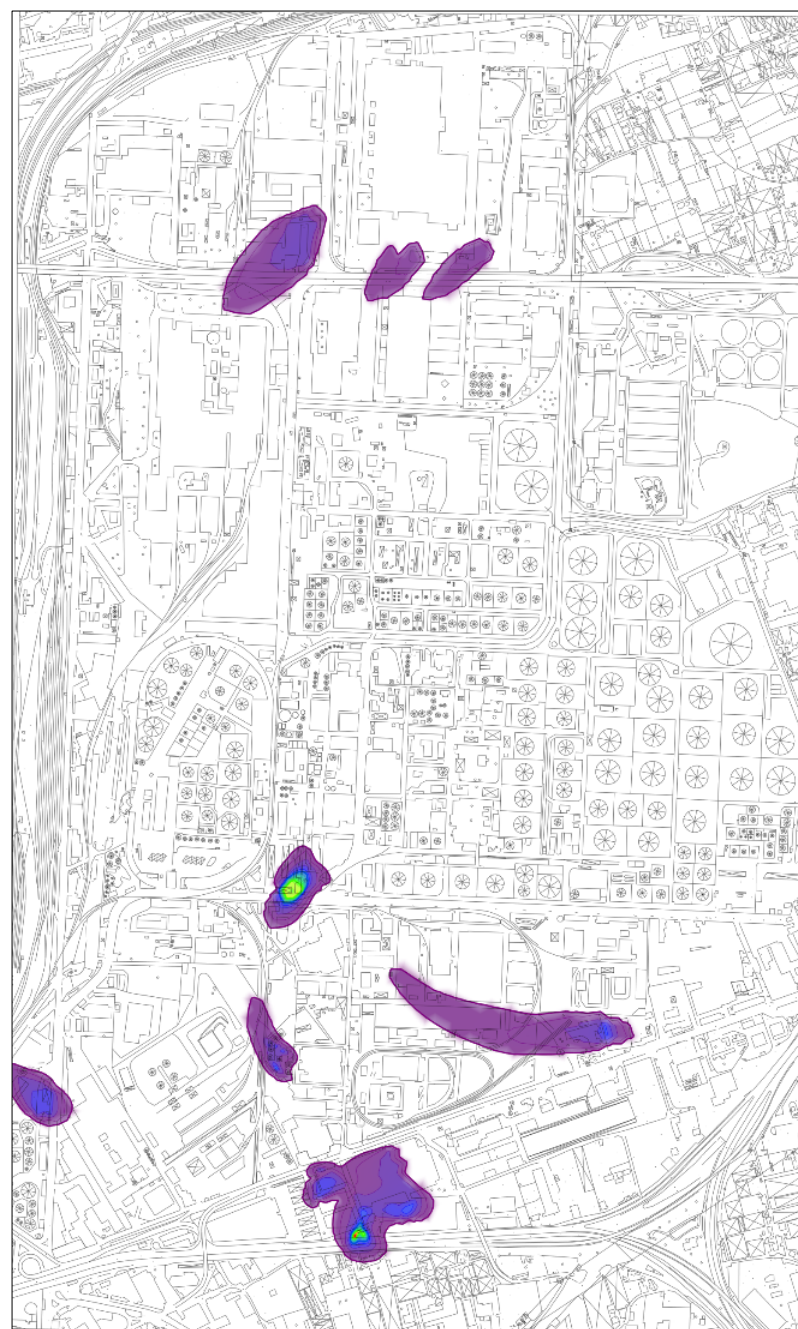
[ $t_1$ ]



[ $t_2$ ]



## SOLUZIONI MODELLO DI TRASPORTO: CLORURO DI VINILE (CV)



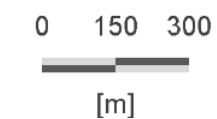
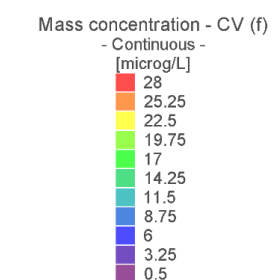
[ $t_0$ ]



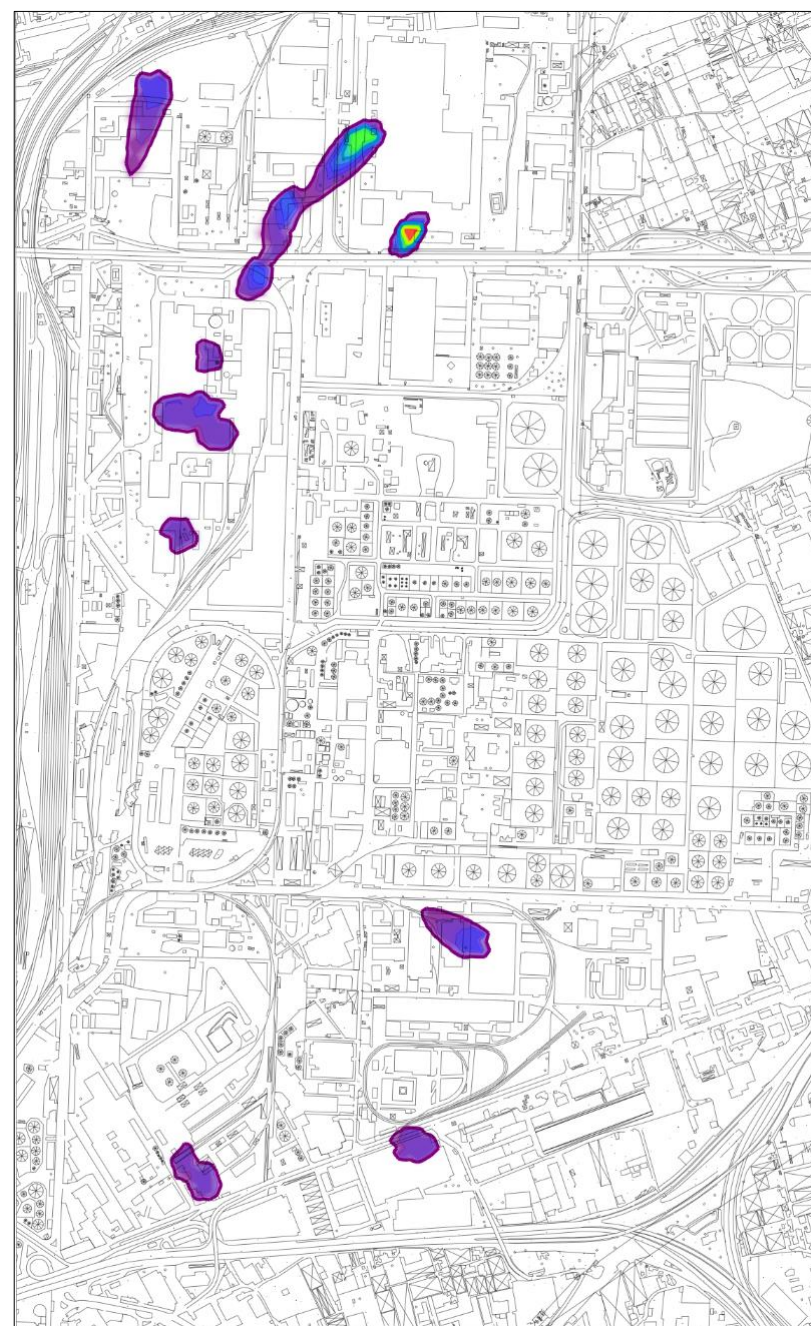
[ $t_1$ ]



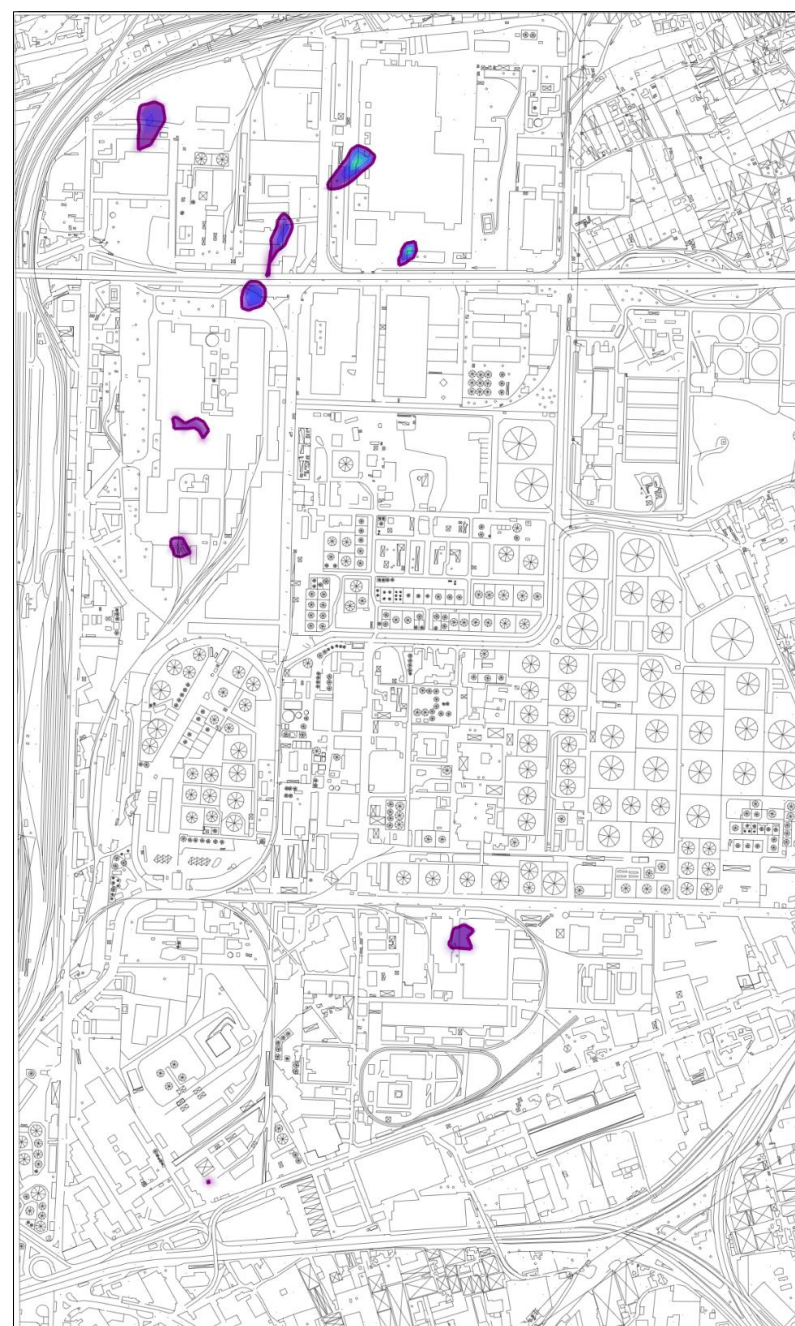
[ $t_2$ ]



## SOLUZIONI MODELLO DI TRASPORTO: TRICLOROMETANO (CF)



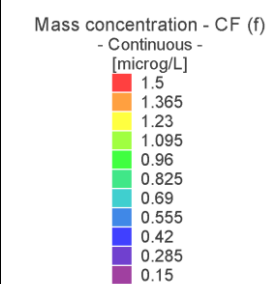
[t<sub>0</sub>]



[t<sub>1</sub>]



[t<sub>2</sub>]



0 150 300

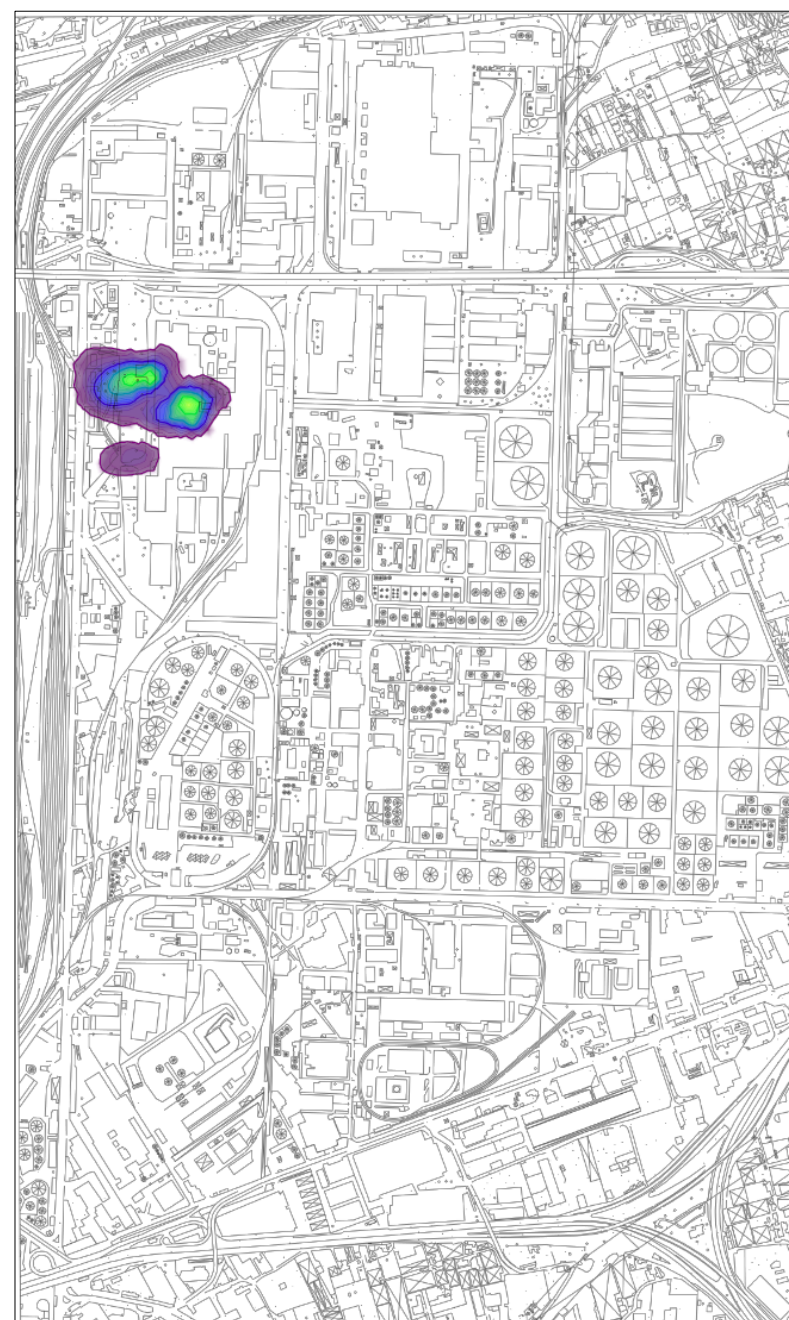


[m]

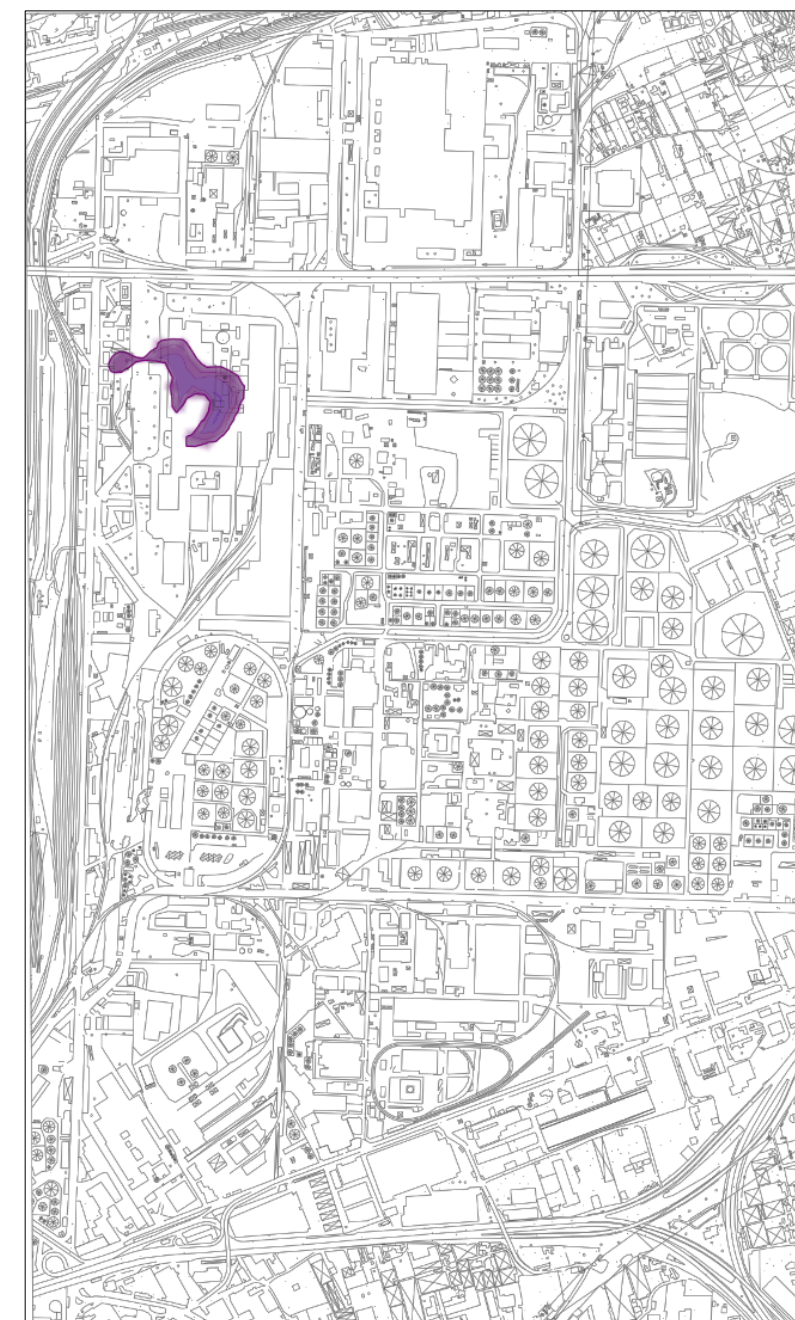
### SOLUZIONI MODELLO DI TRASPORTO: 1,4 DICLOROBENZENE (1,4 DCB)



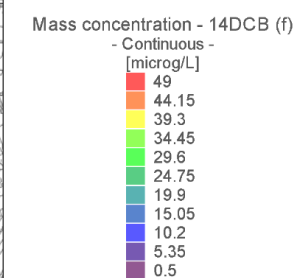
[ $t_0$ ]



[ $t_1$ ]



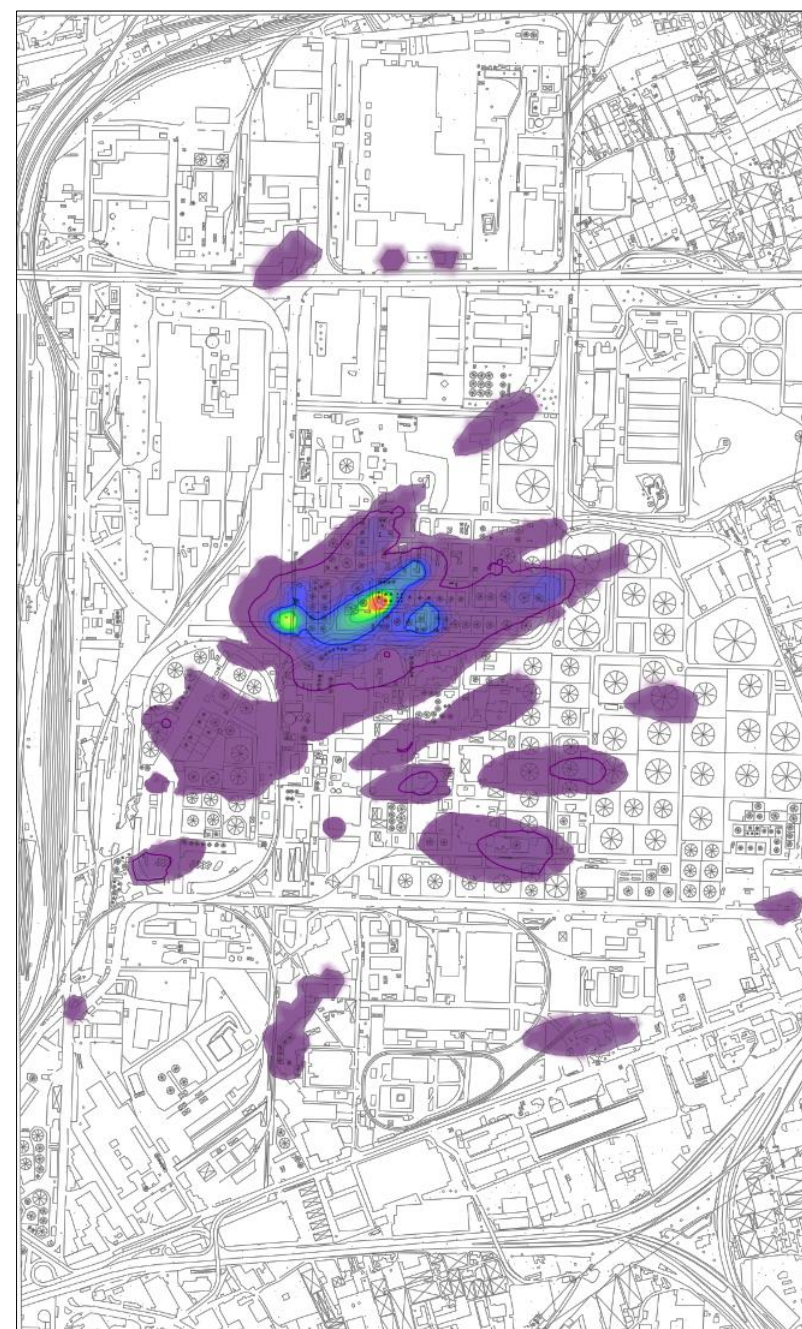
[ $t_2$ ]



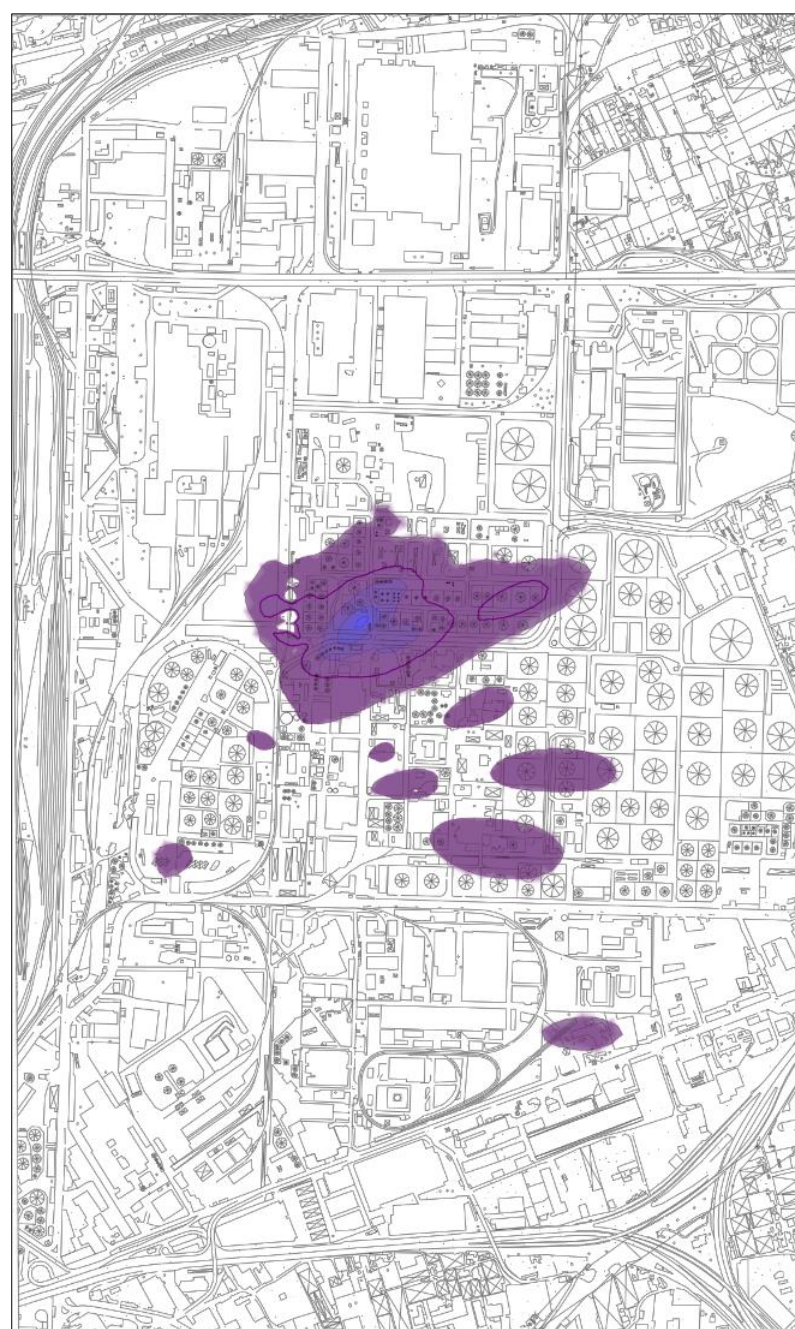
0 150 300

[m]

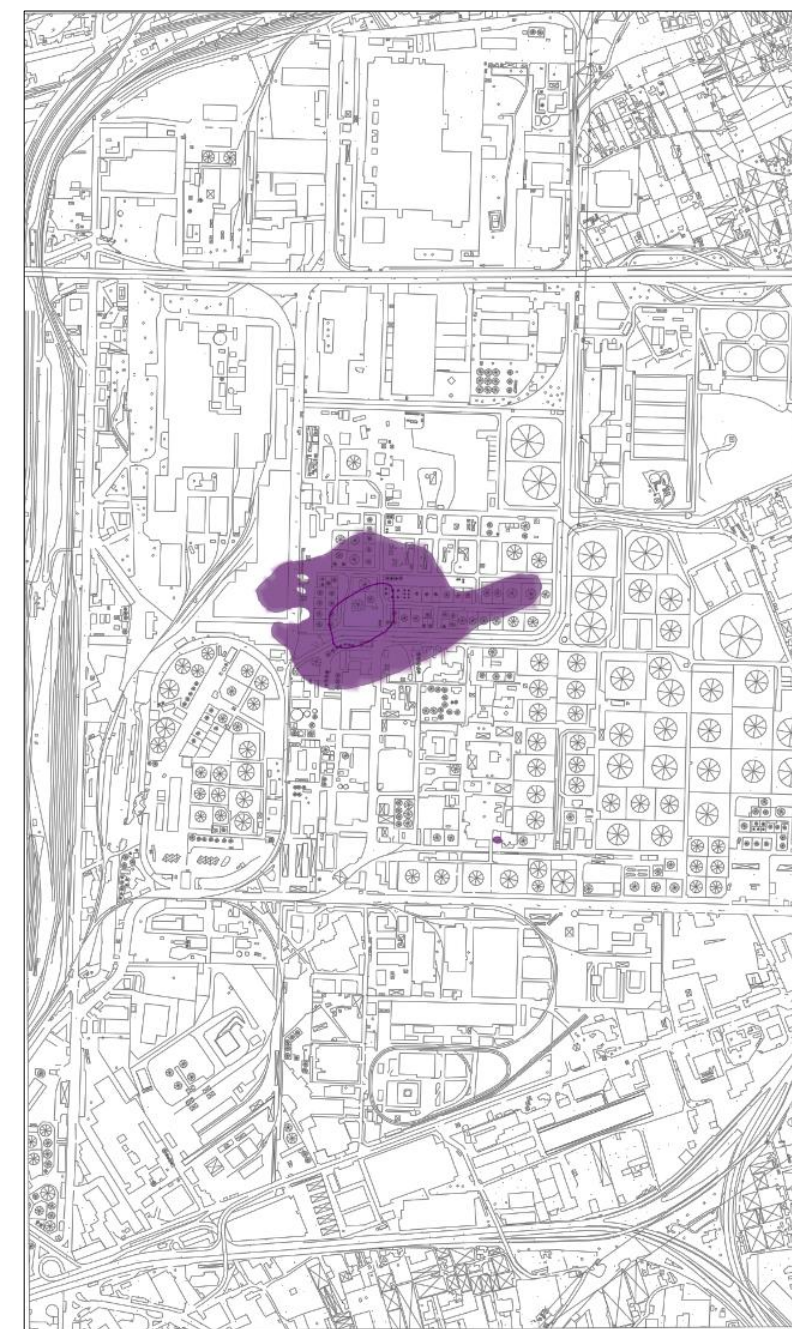
## SOLUZIONI MODELLO DI TRASPORTO: IDROCARBURI TOTALI



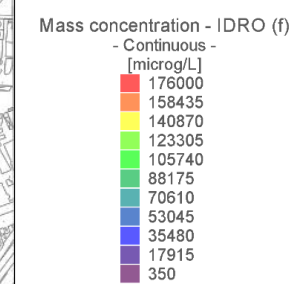
$[t_0]$



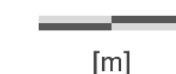
$[t_1]$



$[t_2]$



0 150 300



[m]