

ALLEGATI

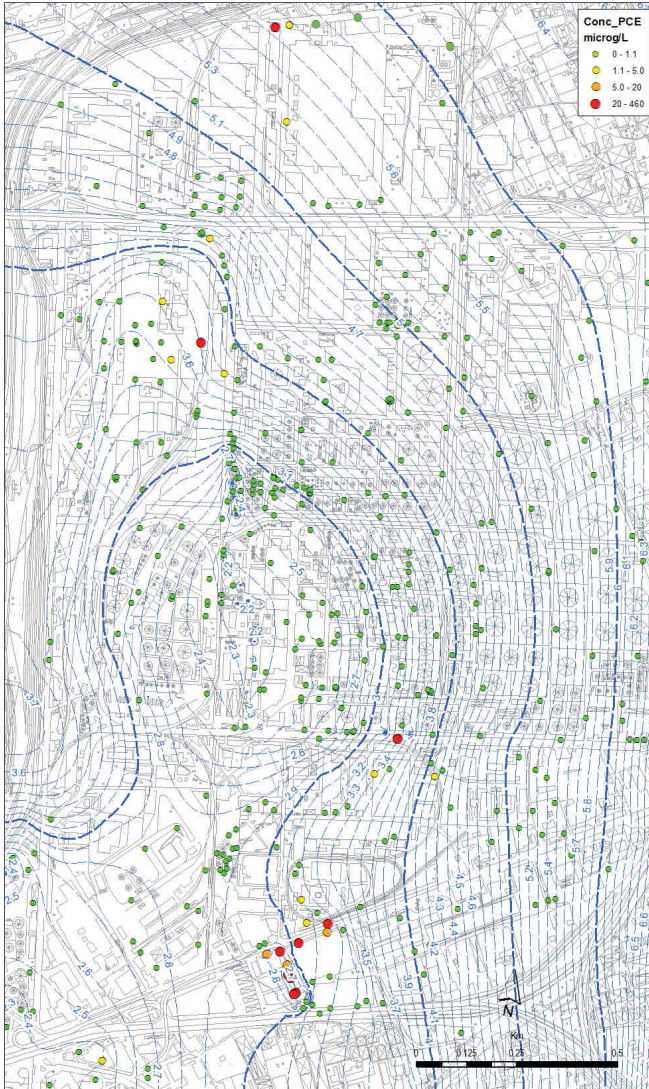
Modello di Flusso e Trasporto degli inquinanti – Area I Fase degli interventi

MAPPE DI ISOCONCENTRAZIONE

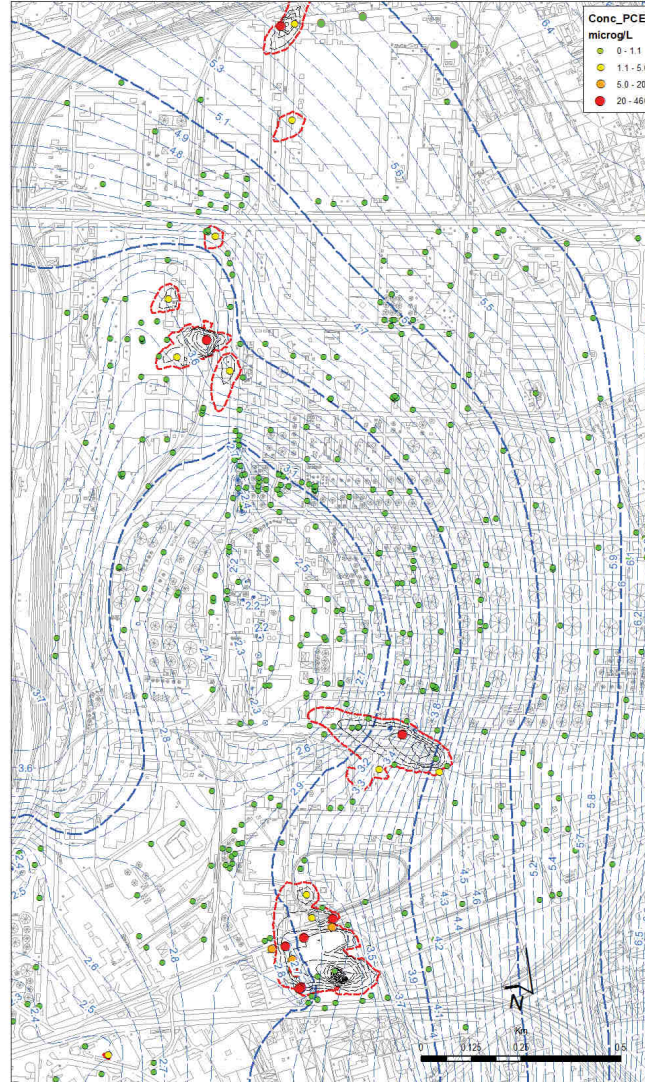
SOLUZIONI DEL MODELLO DI TRASPORTO DEGLI INQUINANTI

MAPPE DI ISOCONCENTRAZIONE: TETRACLOROETILENE (PCE)

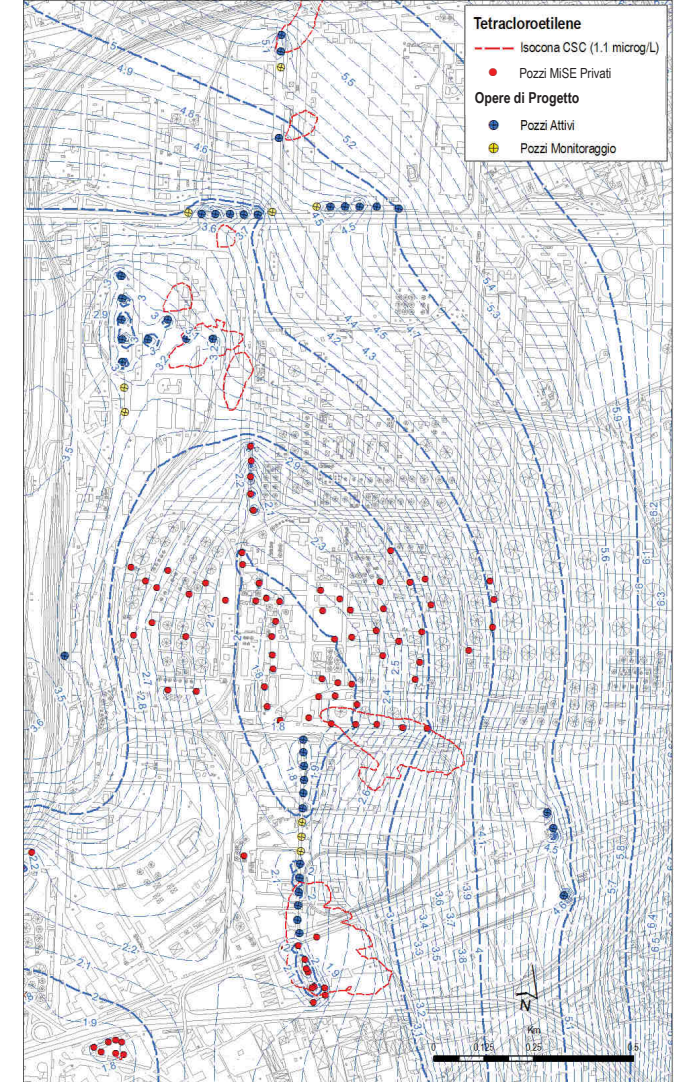
DETERMINAZIONI ANALITICHE



RICOSTRUZIONE PLUMES DI CONTAMINAZIONE (MODELLO)

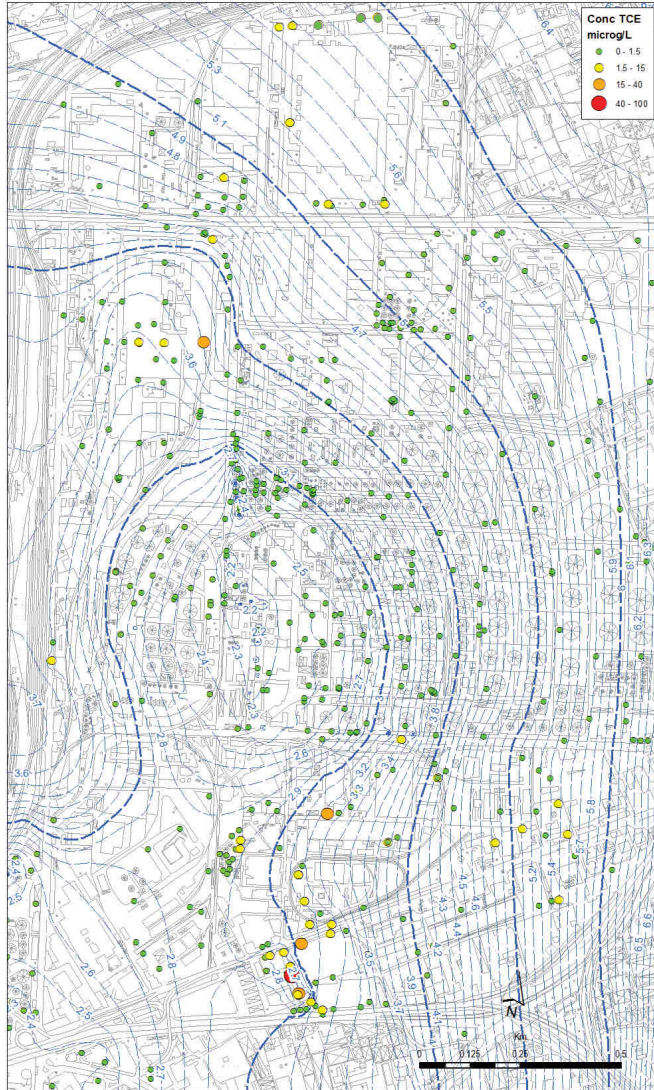


SIMULAZIONE EFFICIENZA SISTEMI DI MISE / BONIFICA

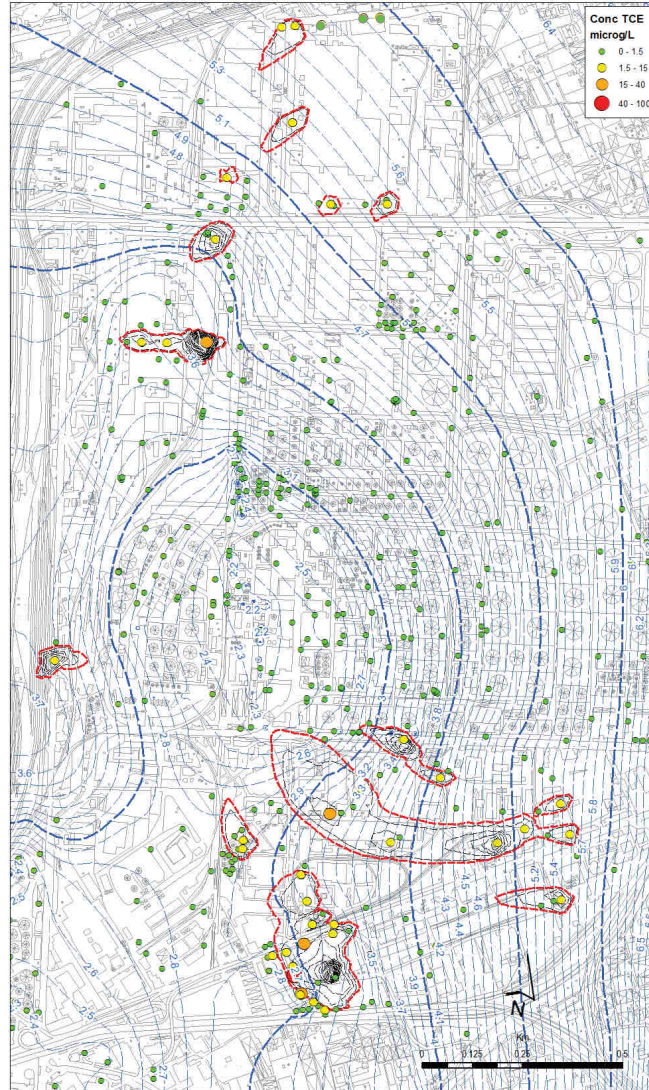


MAPPE DI ISOCONCENTRAZIONE: TRICLOROETILENE (TCE)

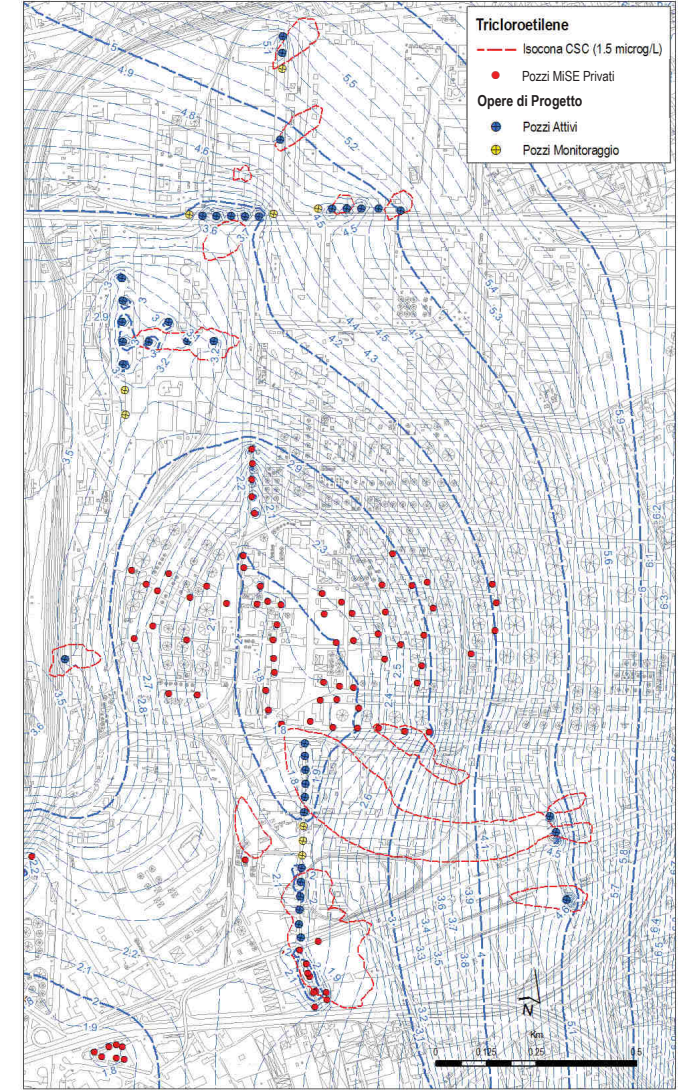
DETERMINAZIONI ANALITICHE



RICOSTRUZIONE PLUMES DI CONTAMINAZIONE (MODELLO)

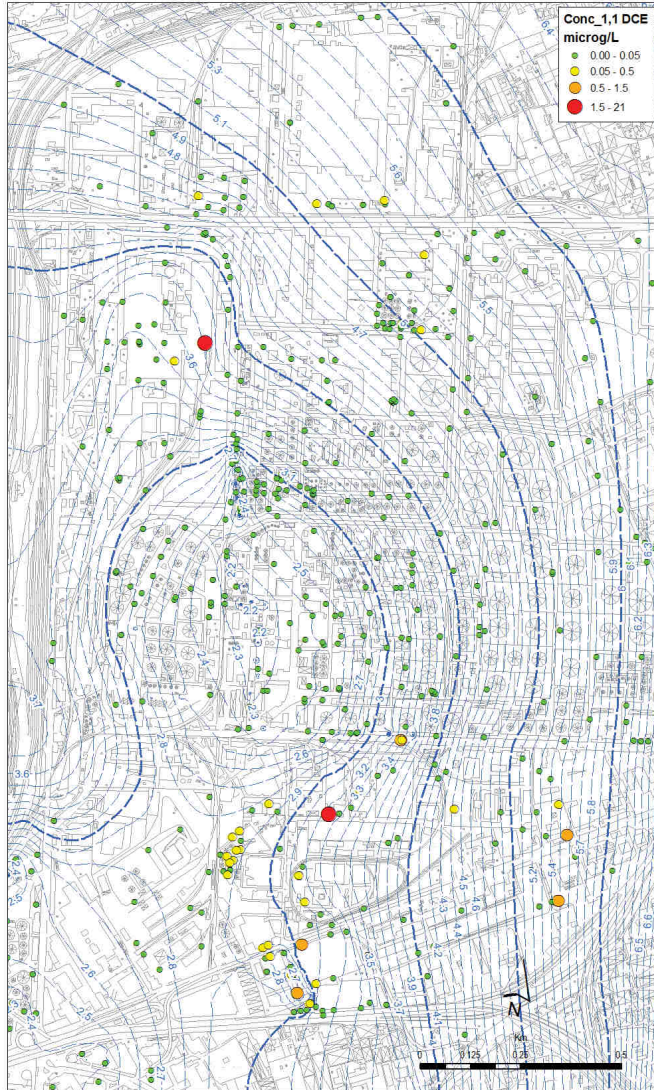


SIMULAZIONE EFFICIENZA SISTEMI DI MISE / BONIFICA

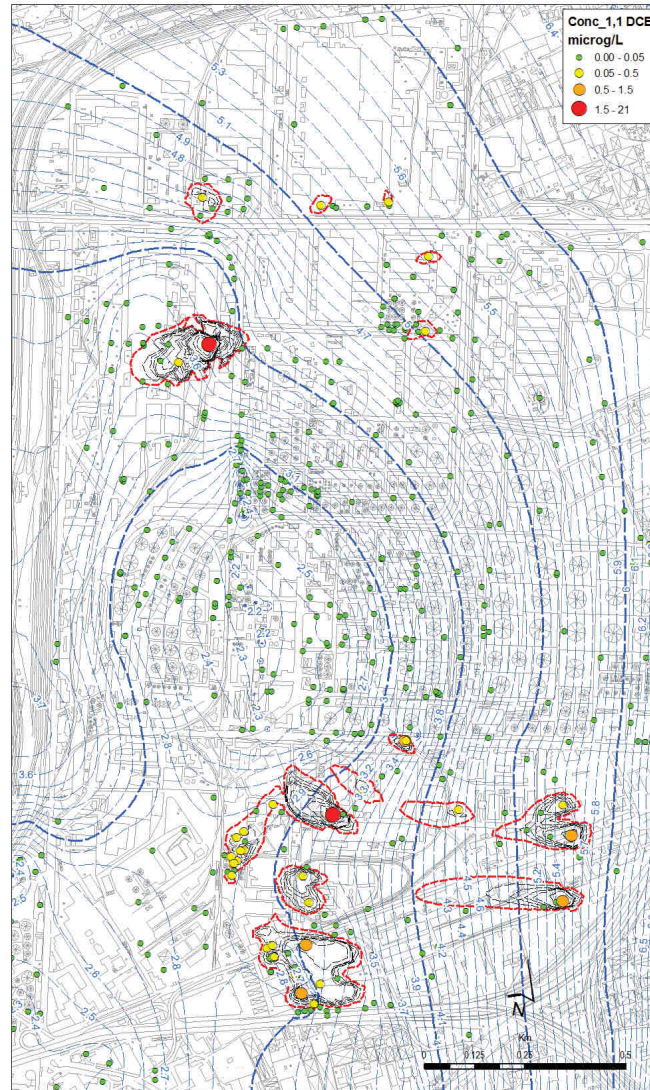


MAPPE DI ISOCONCENTRAZIONE: 1,1 DICLOROETILENE (1,1 DCE)

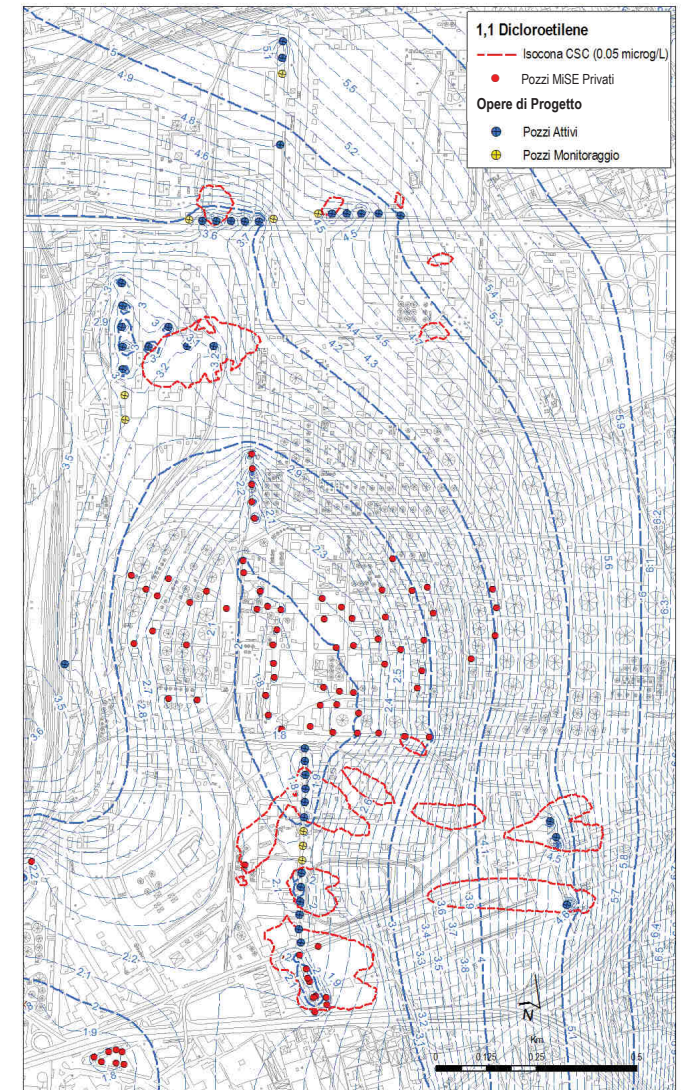
DETERMINAZIONI ANALITICHE



RICOSTRUZIONE PLUMES DI CONTAMINAZIONE (MODELLO)

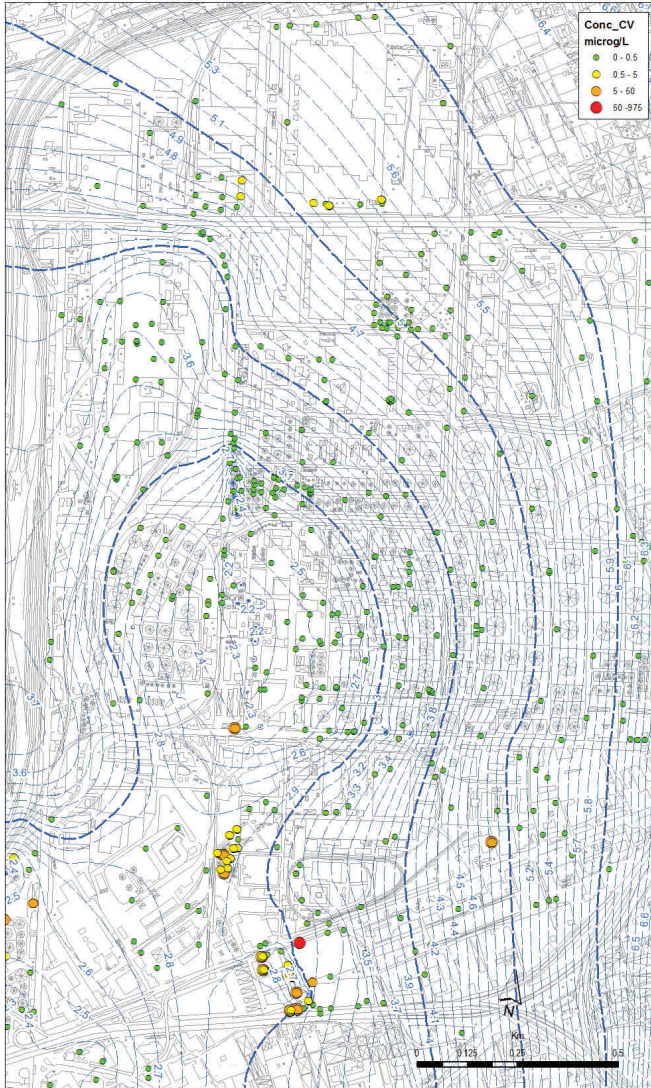


SIMULAZIONE EFFICIENZA SISTEMI DI MISE / BONIFICA

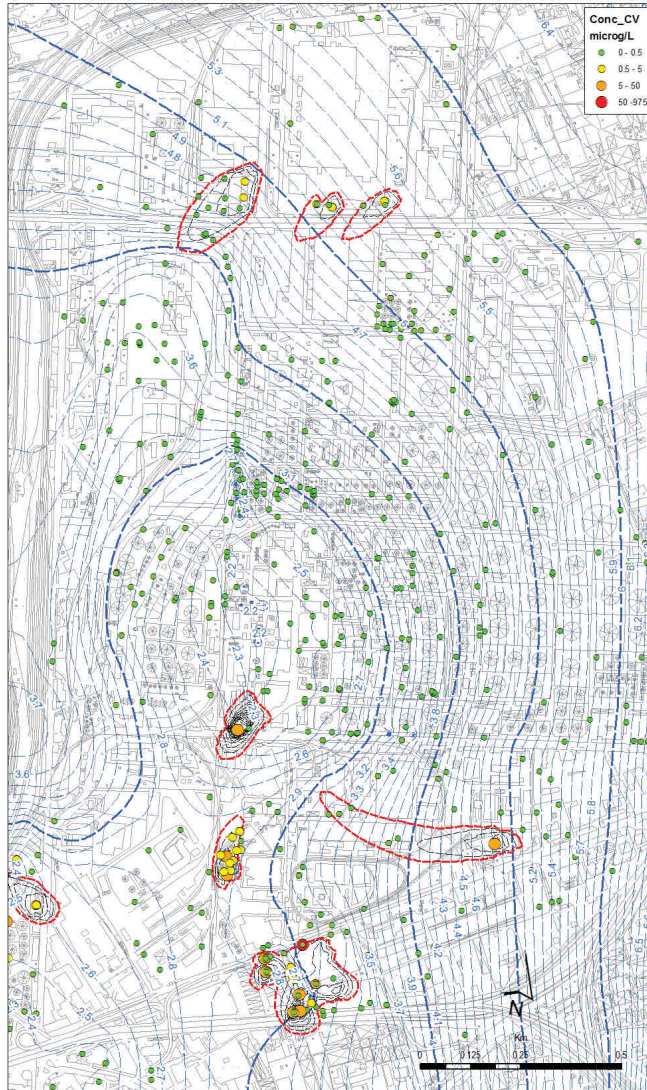


MAPPE DI ISOCONCENTRAZIONE: CLORURO DI VINILE (CV)

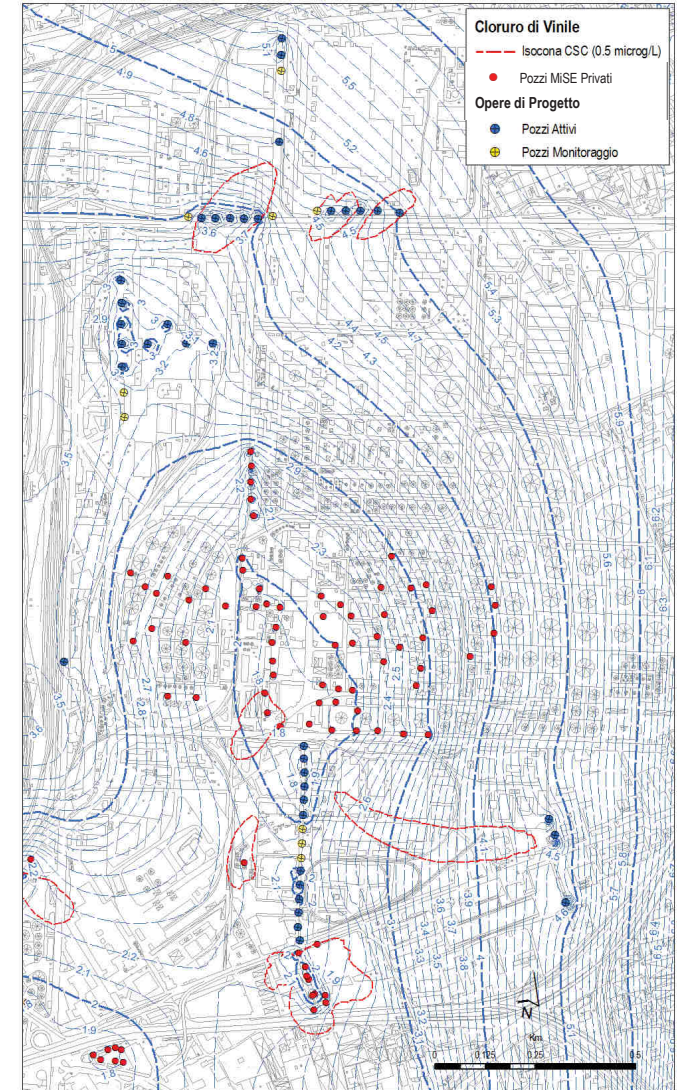
DETERMINAZIONI ANALITICHE



RICOSTRUZIONE PLUMES DI CONTAMINAZIONE (MODELLO)

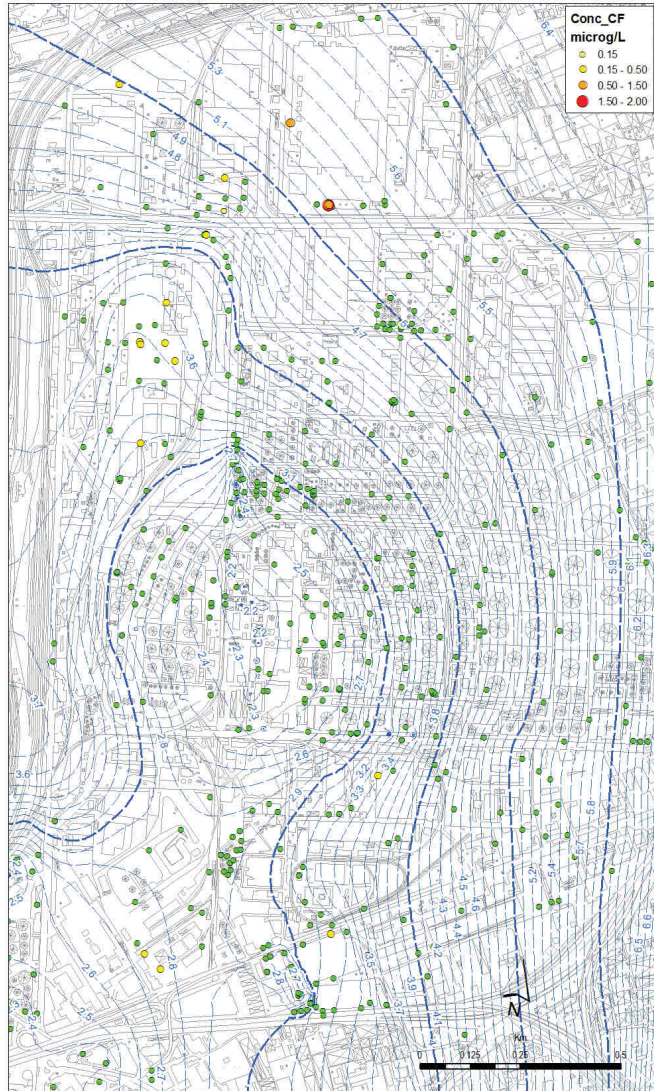


SIMULAZIONE EFFICIENZA SISTEMI DI MISE / BONIFICA

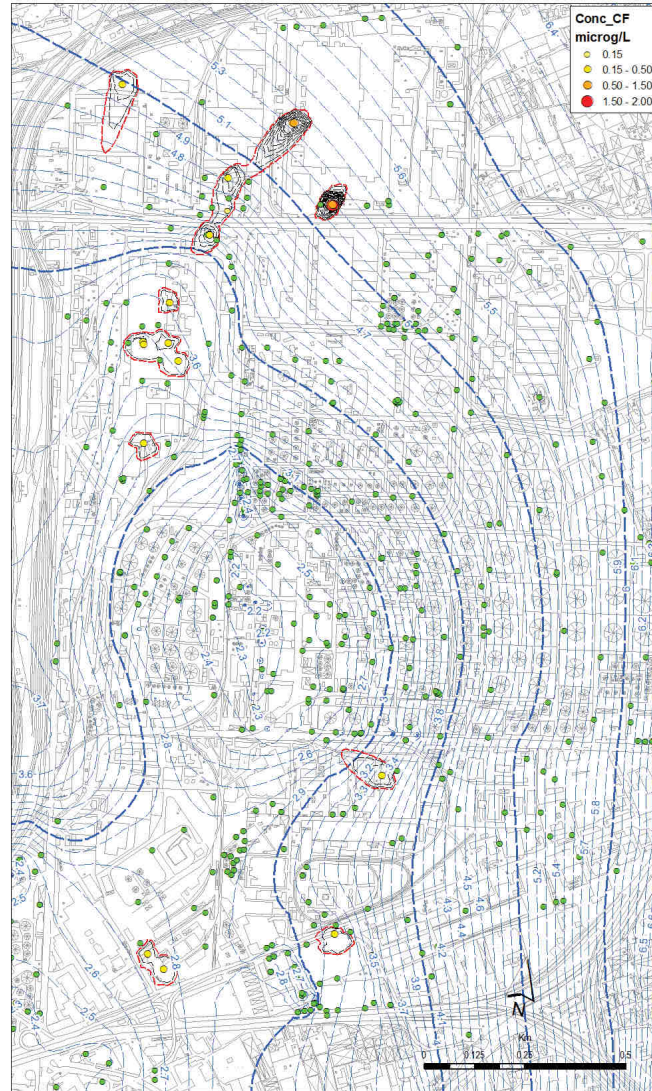


MAPPE DI ISOCONCENTRAZIONE: TRICLOROMETANO (CF)

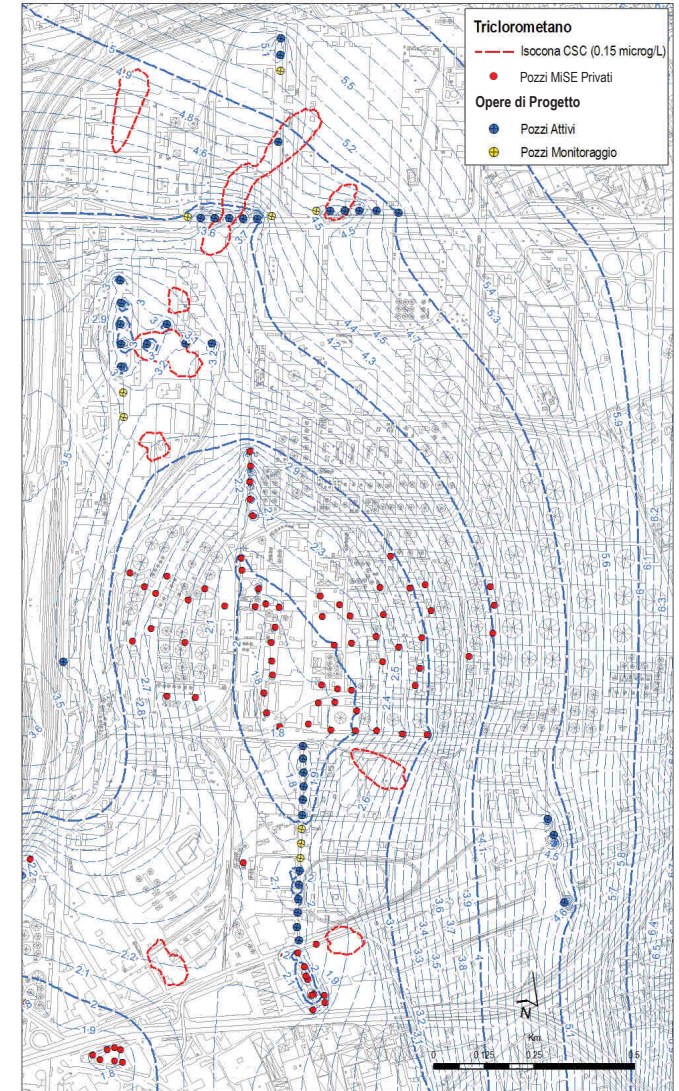
DETERMINAZIONI ANALITICHE



RICOSTRUZIONE PLUMES DI CONTAMINAZIONE (MODELLO)

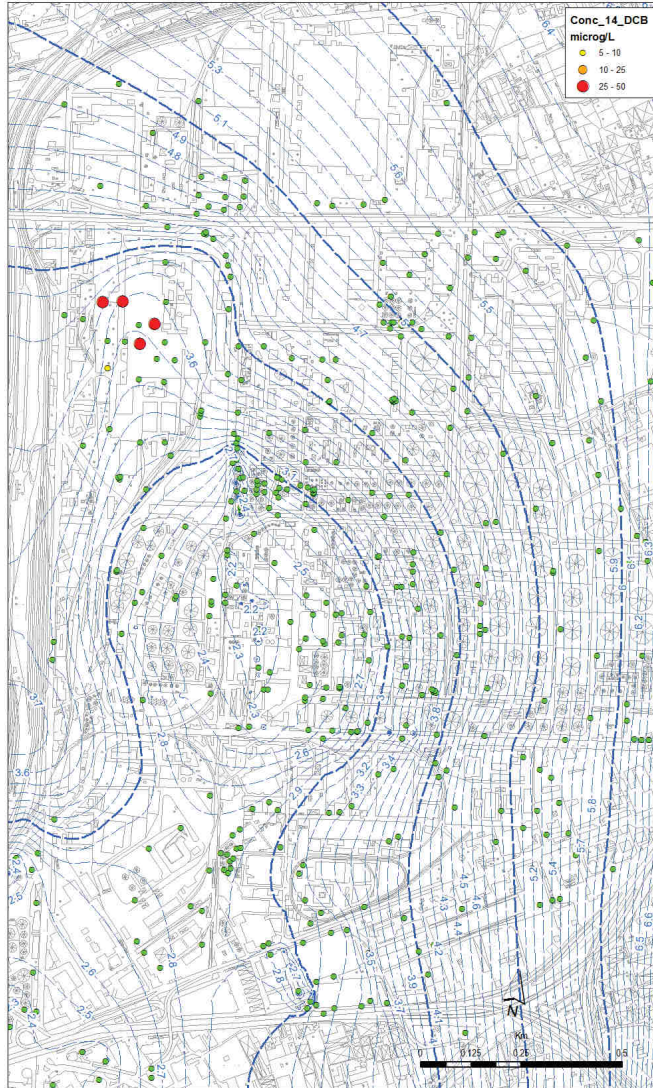


SIMULAZIONE EFFICIENZA SISTEMI DI MISE / BONIFICA

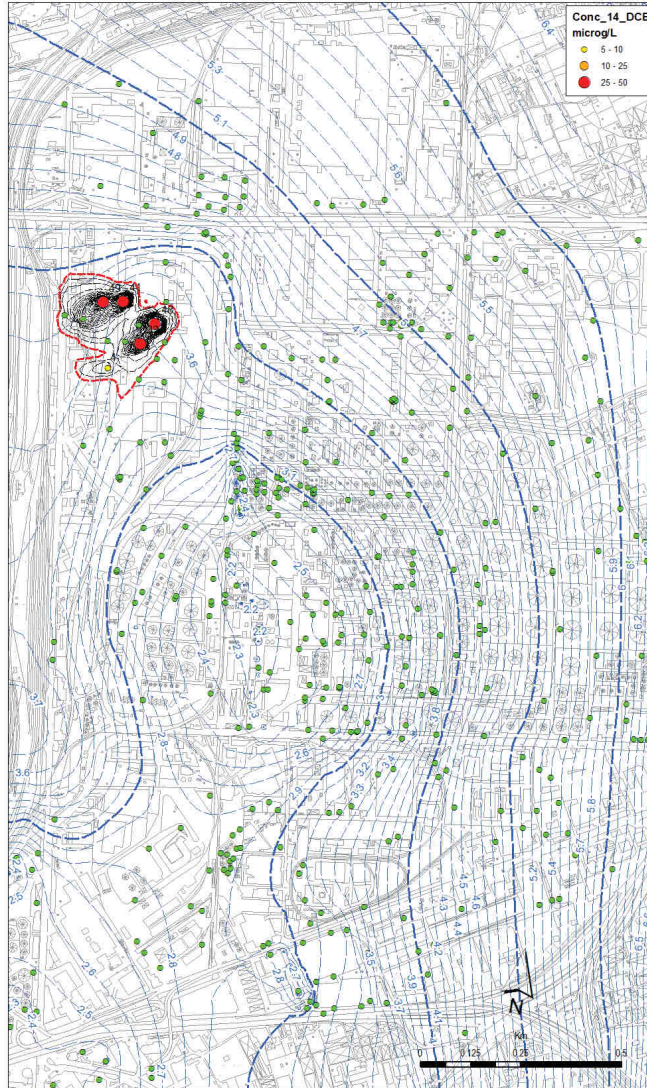


MAPPE DI ISOCONCENTRAZIONE: 1,4 DICLOROBENZENE (1,4 DCB)

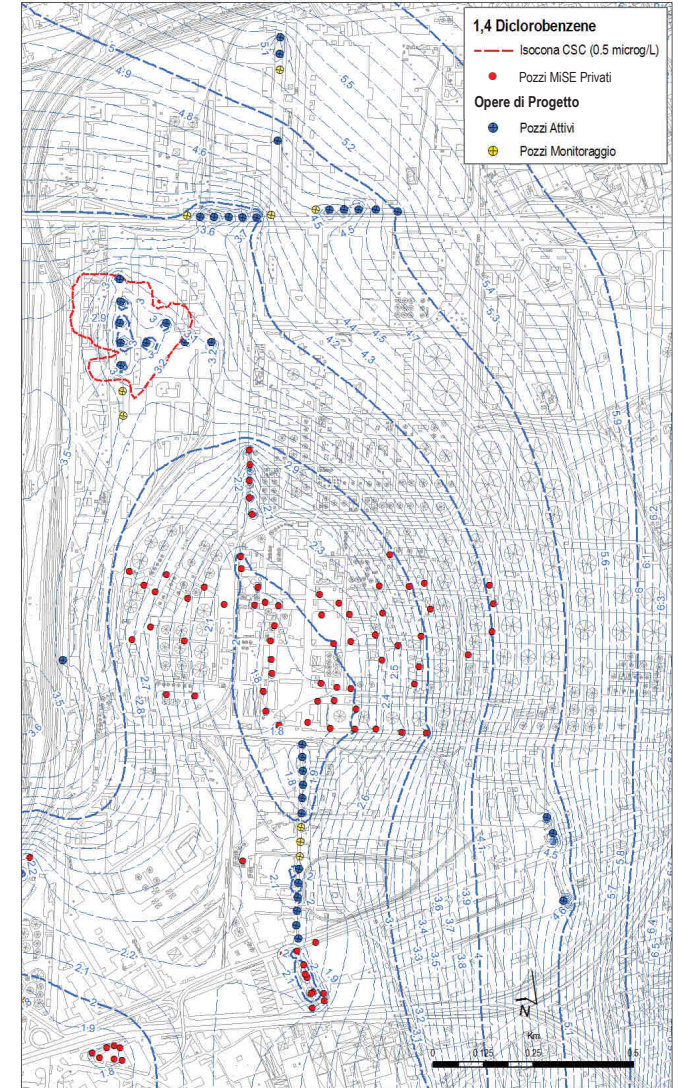
DETERMINAZIONI ANALITICHE



RICOSTRUZIONE PLUMES DI CONTAMINAZIONE (MODELLO)

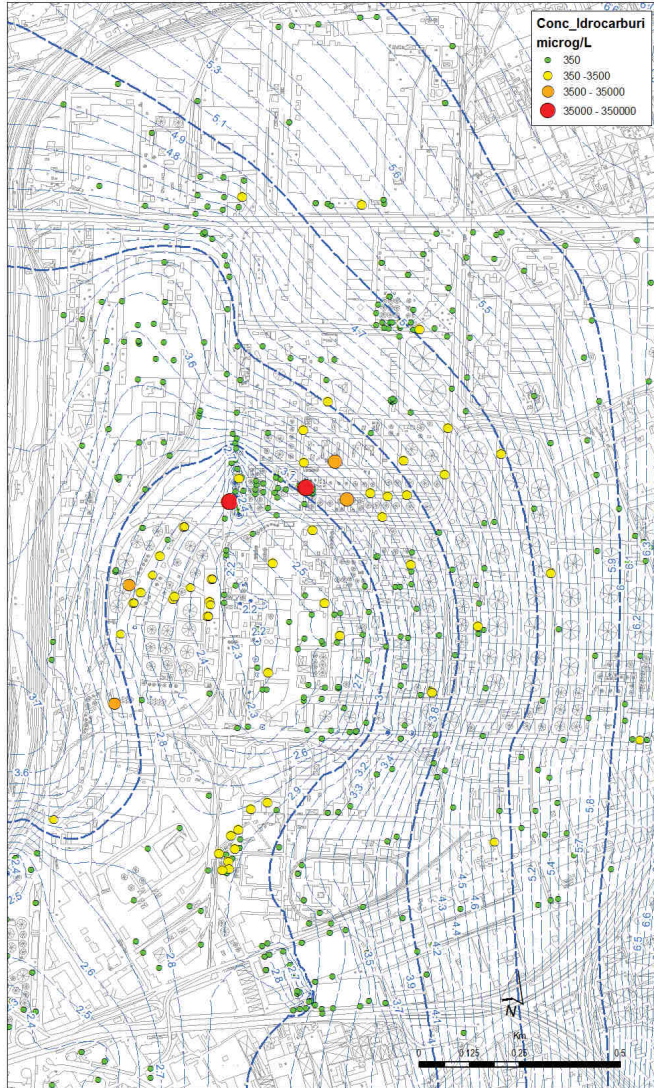


SIMULAZIONE EFFICIENZA SISTEMI DI MISE / BONIFICA

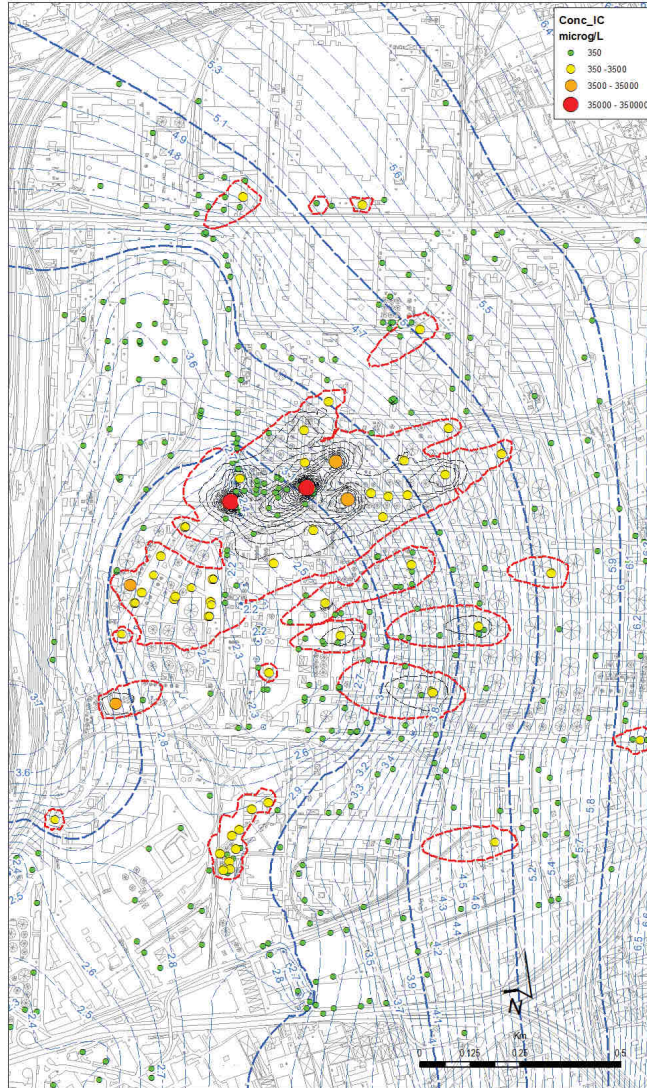


MAPPE DI ISOCONCENTRAZIONE: IDROCARBURI TOTALI

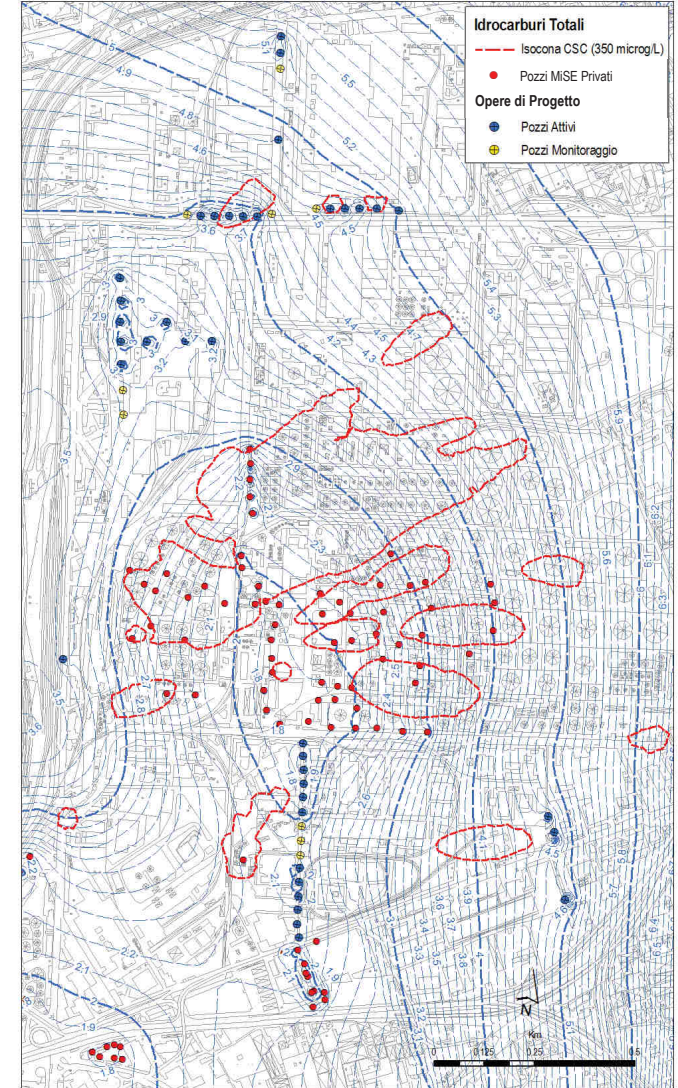
DETERMINAZIONI ANALITICHE



RICOSTRUZIONI PLUMES DI CONTAMINAZIONE (MODELLO)



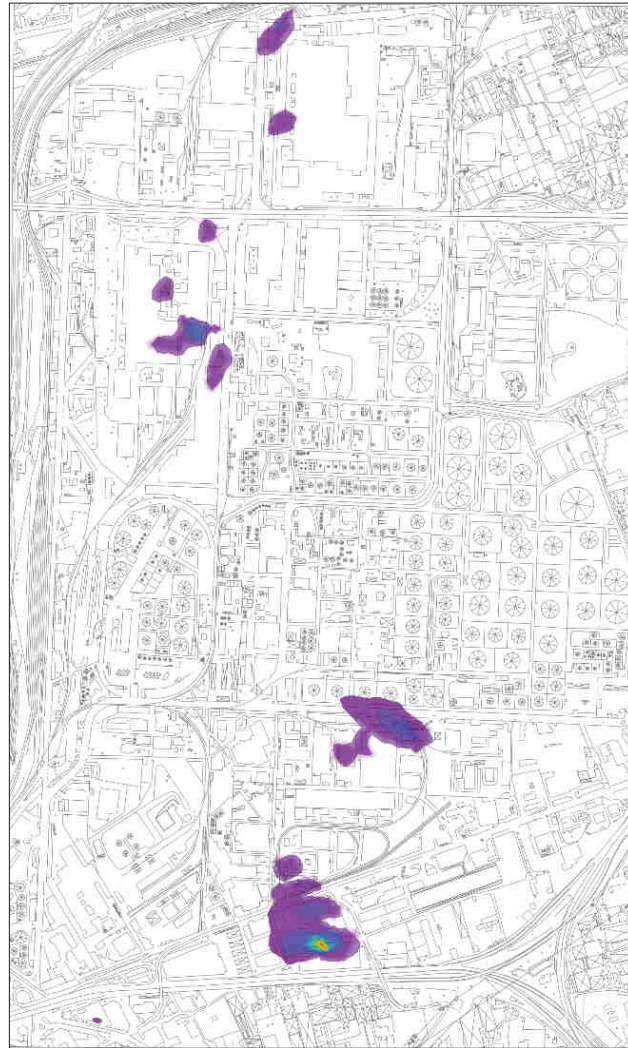
SIMULAZIONE EFFICIENZA SISTEMI DI MISE / BONIFICA



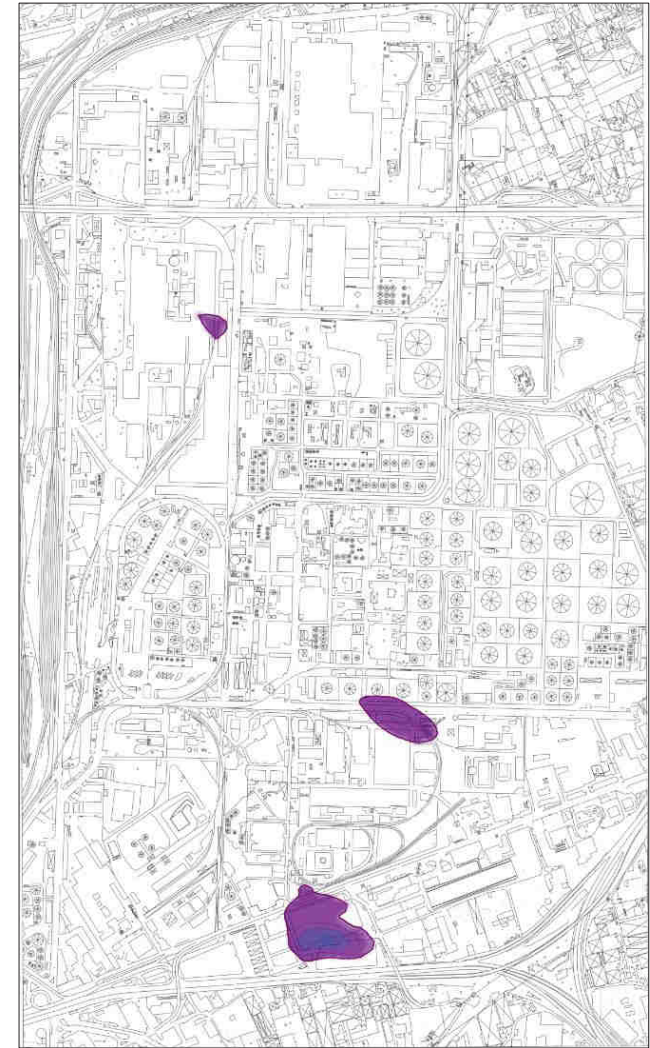
SOLUZIONI MODELLO DI TRASPORTO: TETRACLOROETILENE (PCE)



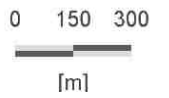
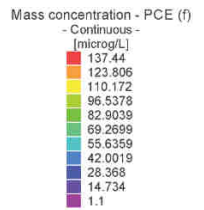
$[t_0]$



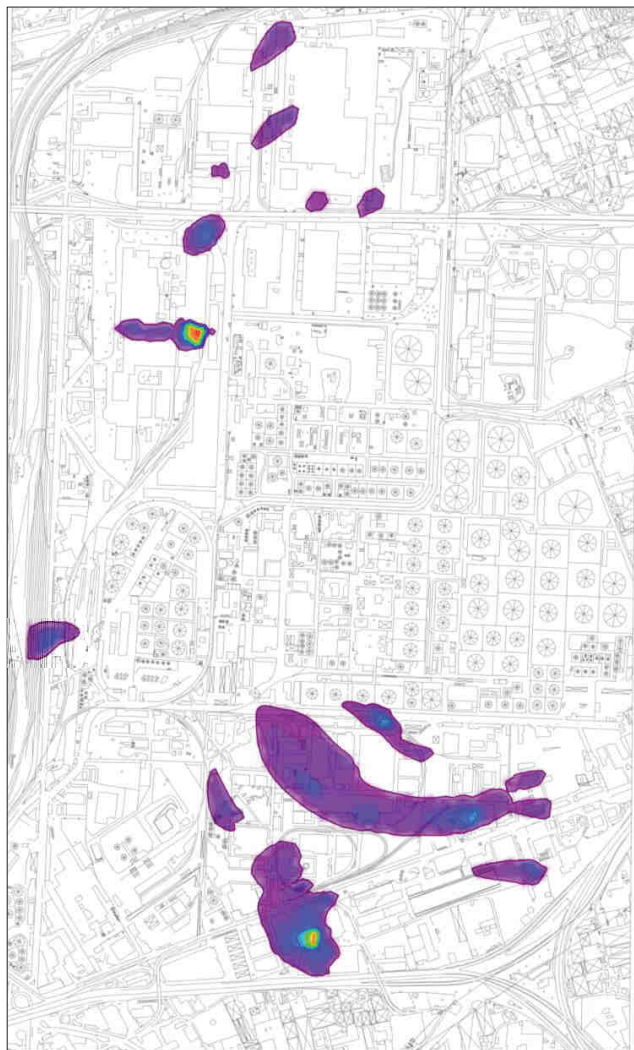
$[t_1]$



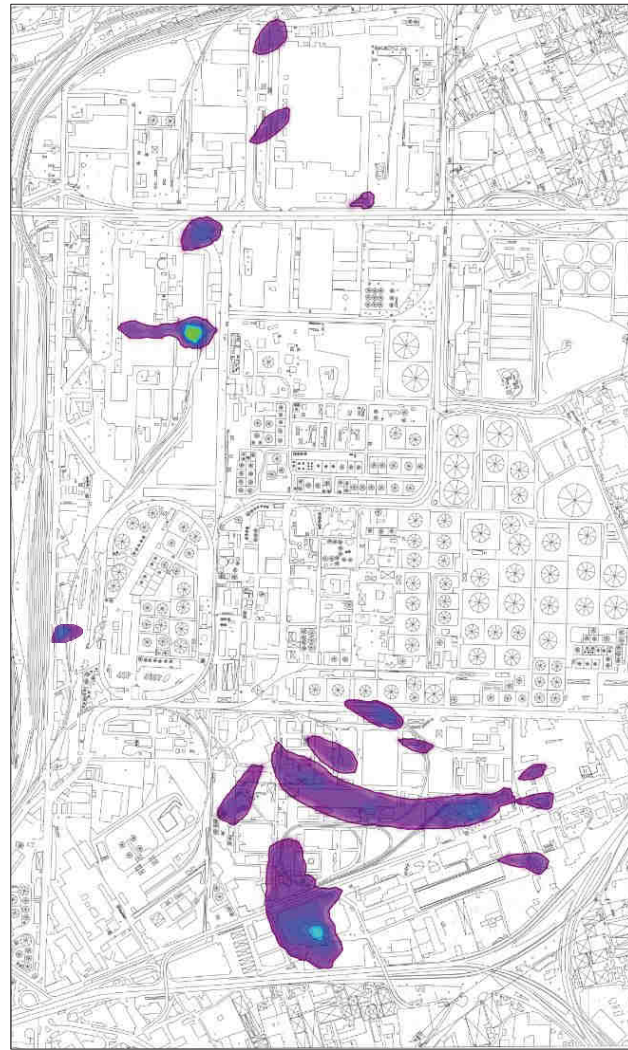
$[t_2]$



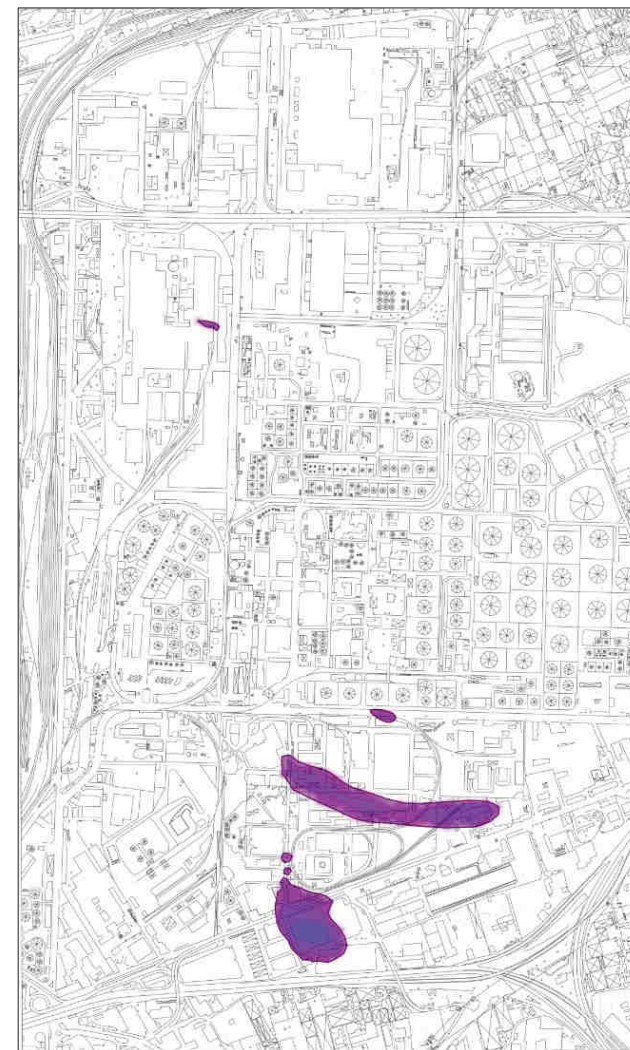
SOLUZIONI MODELLO DI TRASPORTO: TRICLOROETILENE (TCE)



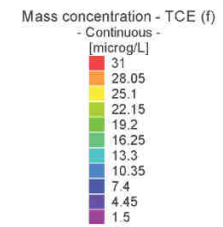
$[t_0]$



$[t_1]$



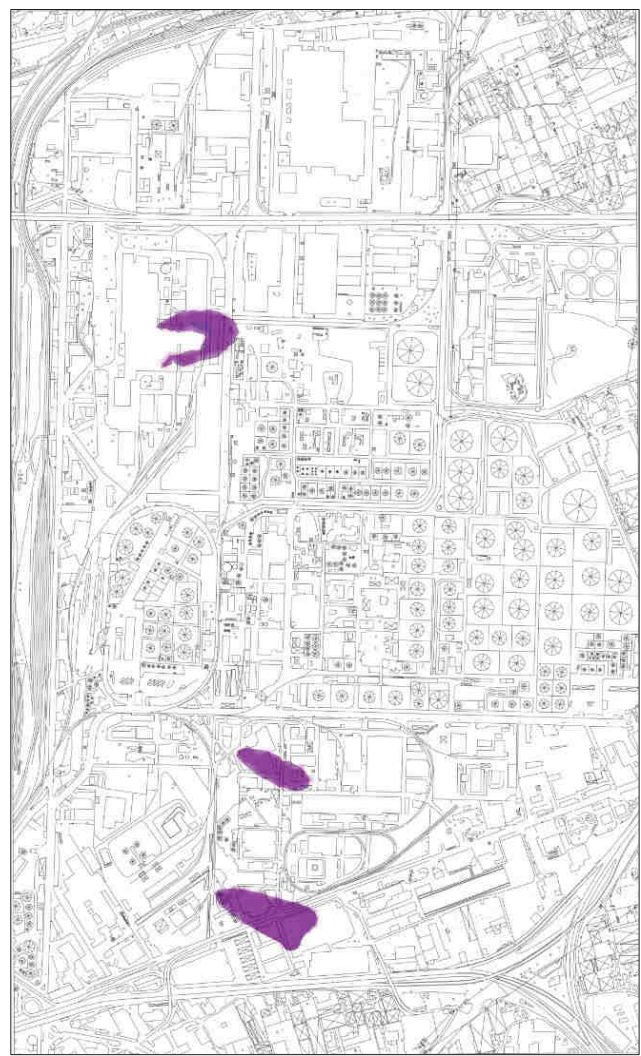
$[t_2]$



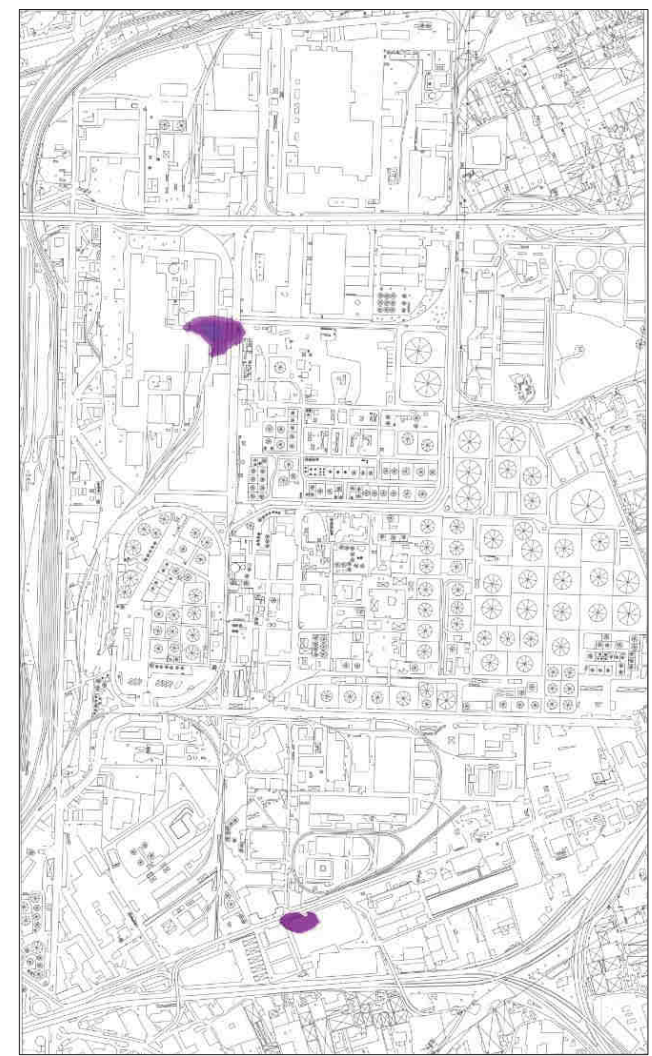
SOLUZIONI MODELLO DI TRASPORTO: 1,1 DICLOROETILENE (1,1 DCE)



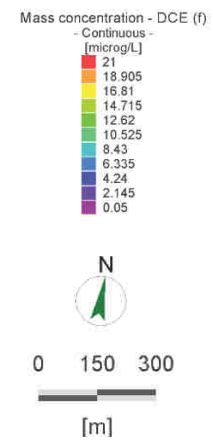
[t_0]



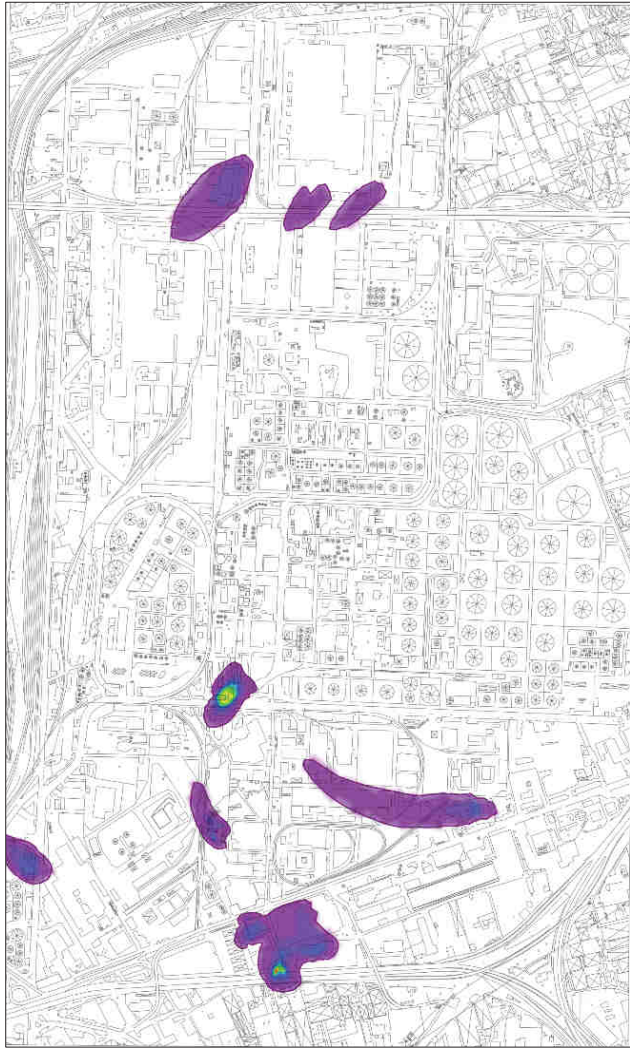
[t_1]



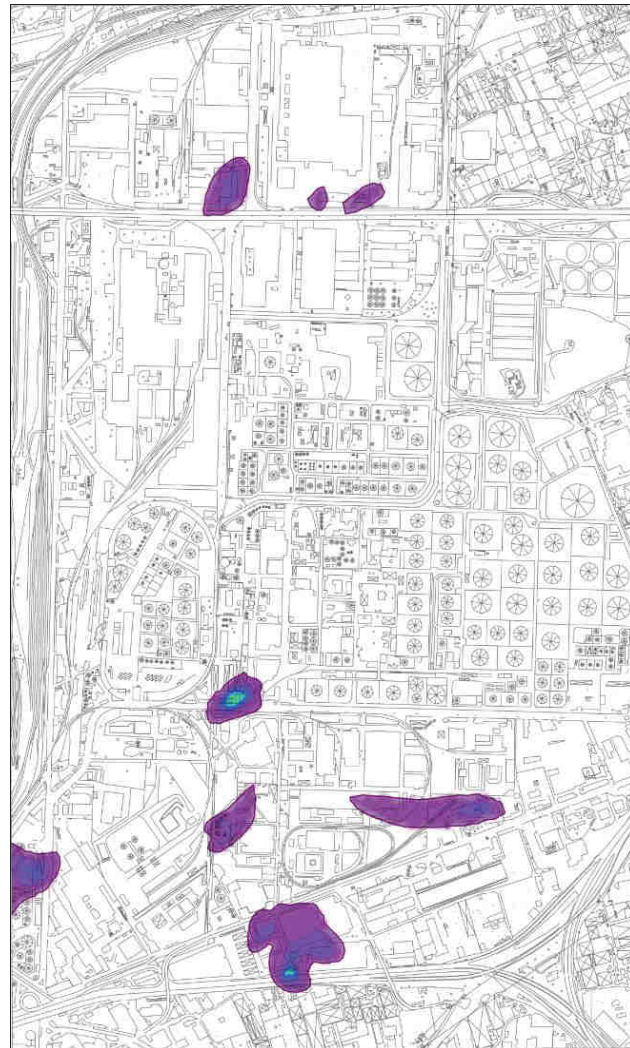
[t_2]



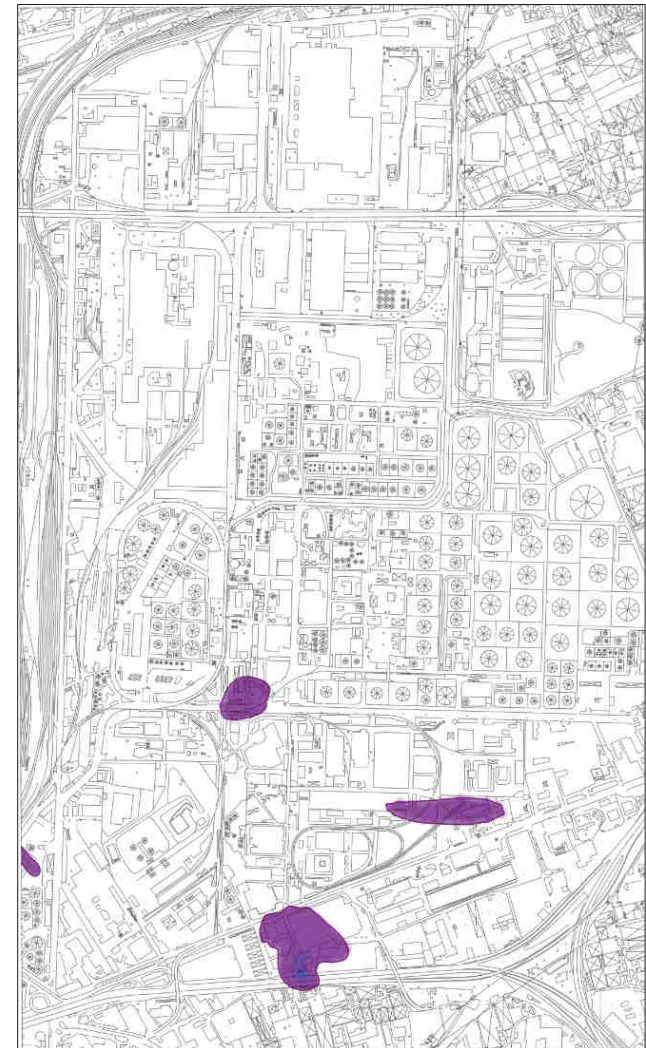
SOLUZIONI MODELLO DI TRASPORTO: CLORURO DI VINILE (CV)



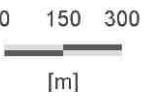
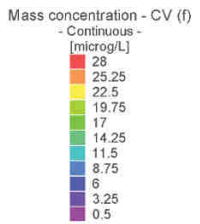
[t_0]



[t_1]



[t_2]



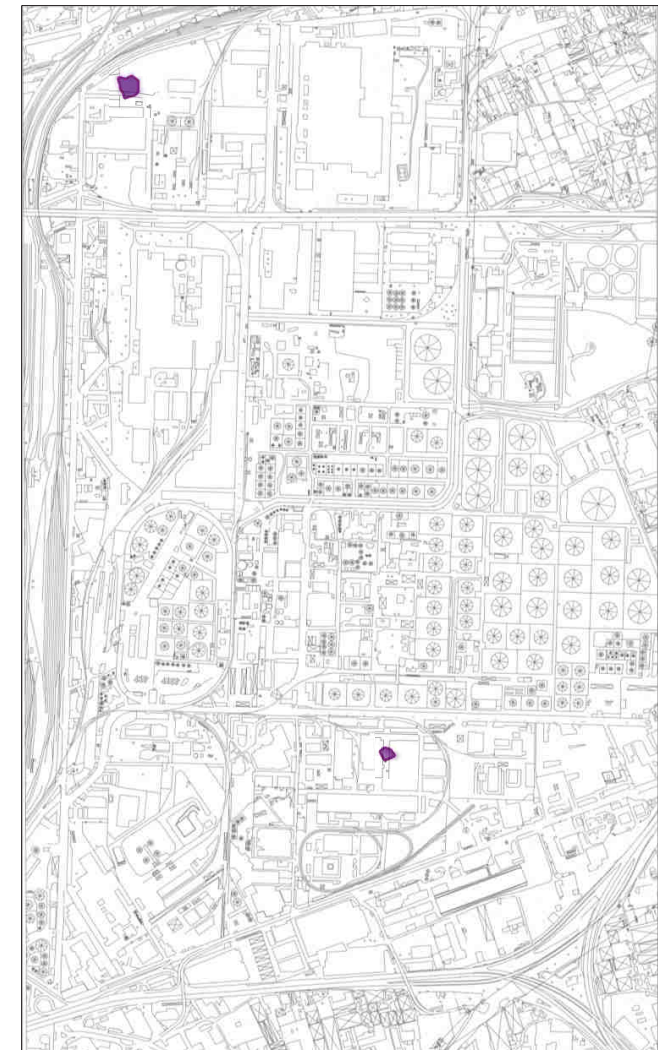
SOLUZIONI MODELLO DI TRASPORTO: TRICLOROMETANO (CF)



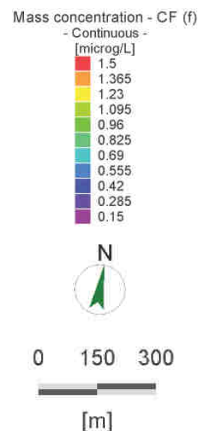
[t_0]



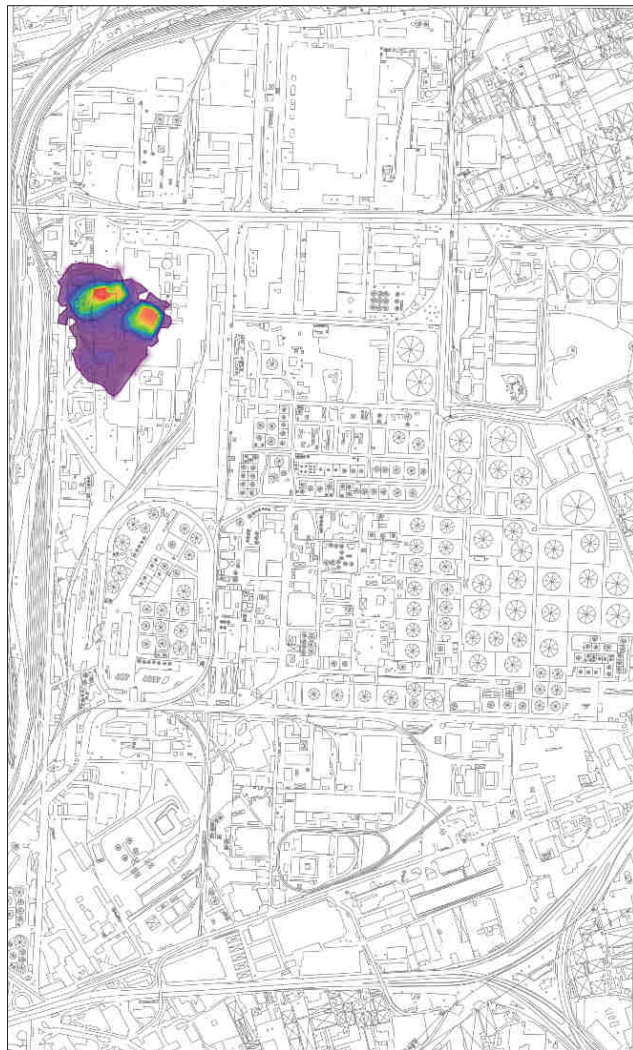
[t_1]



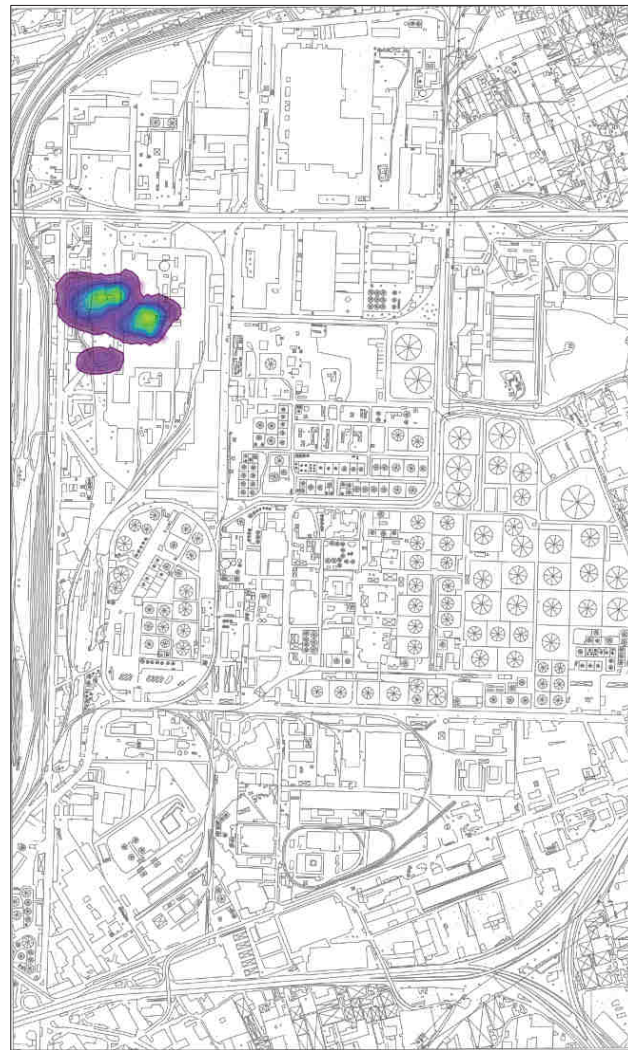
[t_2]



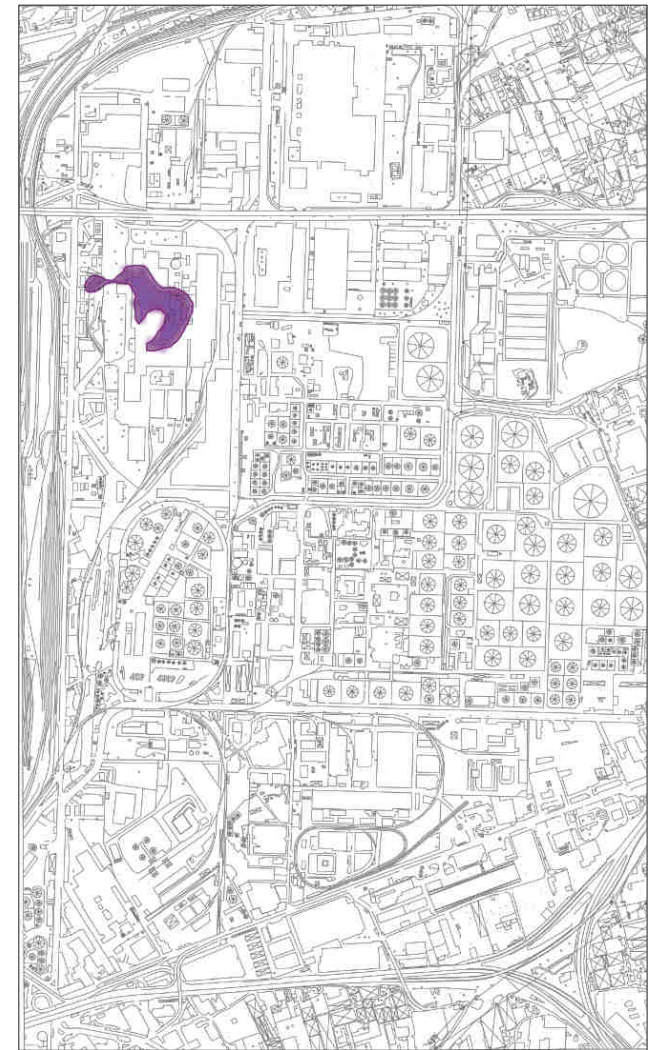
SOLUZIONI MODELLO DI TRASPORTO: 1,4 DICLOROBENZENE (1,4 DCB)



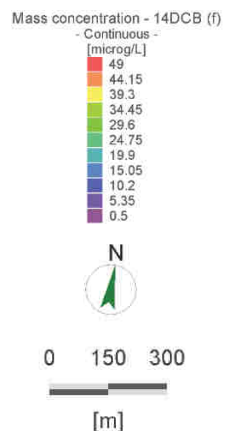
[t_0]



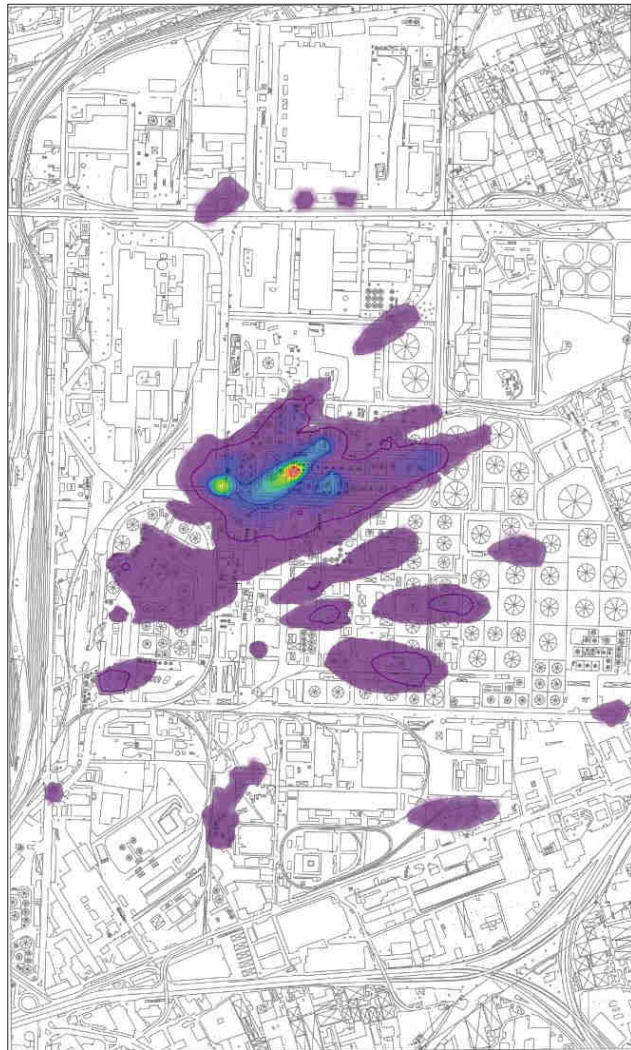
[t_1]



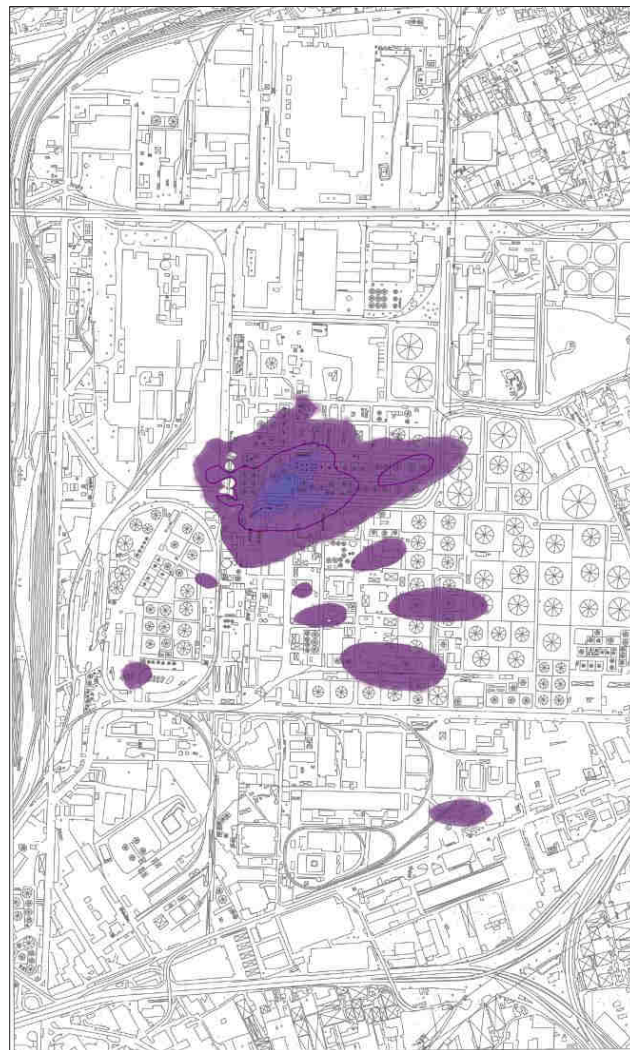
[t_2]



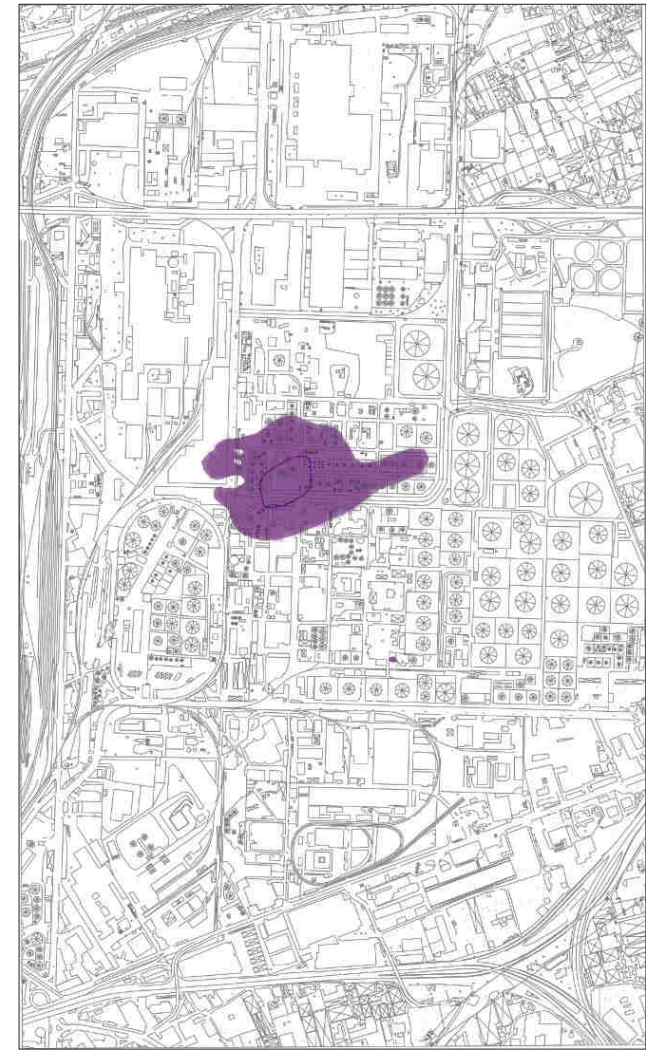
SOLUZIONI MODELLO DI TRASPORTO: IDROCARBURI TOTALI



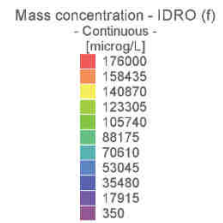
$[t_0]$



$[t_1]$



$[t_2]$



0 150 300



[m]